

Datasheet for ABIN634403  
**anti-RGS6 antibody (C-Term)**



[Go to Product page](#)

2 Images

1 Publication

## Overview

Quantity:	100 µL
Target:	RGS6
Binding Specificity:	C-Term
Reactivity:	Human, Rat, Mouse, Dog
Host:	Rabbit
Clonality:	Polyclonal
Conjugate:	This RGS6 antibody is un-conjugated
Application:	Western Blotting (WB), Immunohistochemistry (IHC)

## Product Details

Immunogen:	RGS6 antibody was raised using the C terminal of RGS6 corresponding to a region with amino acids SAINLDHSYSYEITSQNVKDGGRYTFEDAQEHYKLMKSDSYARFLRSNAY
Specificity:	RGS6 antibody was raised against the C terminal of RGS6
Purification:	Affinity purified

## Target Details

Target:	RGS6
Alternative Name:	RGS6 ( <a href="#">RGS6 Products</a> )
Background:	Members of the RGS (regulator of G protein signaling) family, such as RGS6, modulate G protein function by activating the intrinsic GTPase activity of the alpha (guanine nucleotide-binding) subunits.

## Target Details

---

Molecular Weight:	54 kDa (MW of target protein)
Pathways:	<a href="#">Myometrial Relaxation and Contraction, Regulation of G-Protein Coupled Receptor Protein Signaling</a>

## Application Details

---

Application Notes:	WB: 2 µg/mL, IHC: 4-8 µg/mL Optimal conditions should be determined by the investigator.
Comment:	RGS6 Blocking Peptide, catalog no. 33R-8297, is also available for use as a blocking control in assays to test for specificity of this RGS6 antibody
Restrictions:	For Research Use only

## Handling

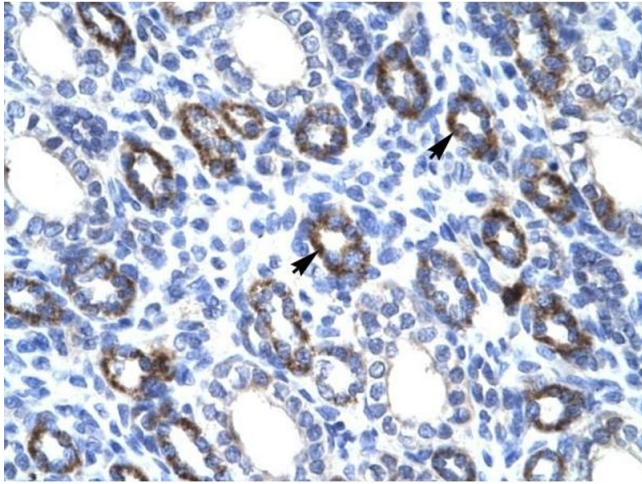
---

Format:	Lyophilized
Reconstitution:	Lyophilized powder. Add distilled water for a 1 mg/mL concentration of RGS6 antibody in PBS
Concentration:	Lot specific
Buffer:	PBS
Handling Advice:	Avoid repeated freeze/thaw cycles. Dilute only prior to immediate use.
Storage:	4 °C/-20 °C
Storage Comment:	Store at 2-8 °C for short periods. For longer periods of storage, store at -20 °C.

## Publications

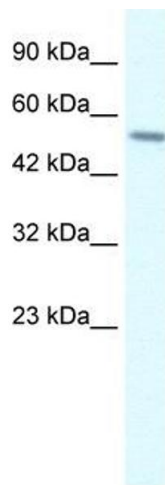
---

Product cited in:	Gao, Shen, Gonzalez, Dong, Kannan, Hoang, Eisinger, Pandey, Javadi, Chang, Wang, Overstreet-Wadiche, Zhao: "RGS6 Mediates Effects of Voluntary Running on Adult Hippocampal Neurogenesis." in: <b>Cell reports</b> , Vol. 32, Issue 5, pp. 107997, (2020) ( <a href="#">PubMed</a> ).
-------------------	---



### Immunohistochemistry

**Image 1.** RGS6 antibody was used for immunohistochemistry at a concentration of 4-8 ug/ml to stain Epithelial cells of renal tubule (arrows) in Human Kidney. Magnification is at 400X



### Western Blotting

**Image 2.** RGS6 antibody used at 2 ug/ml to detect target protein.