

Datasheet for ABIN634410 **anti-ASB8 antibody (N-Term)**



[Go to Product page](#)

1 Image

Overview

Quantity:	100 µL
Target:	ASB8
Binding Specificity:	N-Term
Reactivity:	Human, Mouse, Rat
Host:	Rabbit
Clonality:	Polyclonal
Conjugate:	This ASB8 antibody is un-conjugated
Application:	Western Blotting (WB)

Product Details

Immunogen:	ASB8 antibody was raised using the N terminal of ASB8 corresponding to a region with amino acids MSSSMWYIMQSIQSKYLSERLIRTIAAIRSFPHDNVEDLIRGGADVNCT
Specificity:	ASB8 antibody was raised against the N terminal of ASB8
Purification:	Affinity purified

Target Details

Target:	ASB8
Alternative Name:	ASB8 (ASB8 Products)
Background:	ASB8 may be a substrate-recognition component of a SCF-like ECS (Elongin-Cullin-SOCS-box protein) E3 ubiquitin-protein ligase complex which mediates the ubiquitination and subsequent proteasomal degradation of target proteins.

Target Details

Molecular Weight: 32 kDa (MW of target protein)

Application Details

Application Notes: WB: 1 µg/mL
Optimal conditions should be determined by the investigator.

Comment: ASB8 Blocking Peptide, catalog no. 33R-6512, is also available for use as a blocking control in assays to test for specificity of this ASB8 antibody

Restrictions: For Research Use only

Handling

Format: Lyophilized

Reconstitution: Lyophilized powder. Add distilled water for a 1 mg/mL concentration of ASB8 antibody in PBS

Concentration: Lot specific

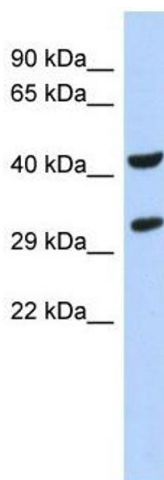
Buffer: PBS

Handling Advice: Avoid repeated freeze/thaw cycles.
Dilute only prior to immediate use.

Storage: 4 °C/-20 °C

Storage Comment: Store at 2-8 °C for short periods. For longer periods of storage, store at -20 °C.

Images



Western Blotting

Image 1.