

Datasheet for ABIN634412
anti-Pleckstrin antibody (N-Term)



[Go to Product page](#)

1 Image

Overview

Quantity:	100 µL
Target:	Pleckstrin (PLEK)
Binding Specificity:	N-Term
Reactivity:	Human, Mouse, Rat
Host:	Rabbit
Clonality:	Polyclonal
Conjugate:	This Pleckstrin antibody is un-conjugated
Application:	Western Blotting (WB)

Product Details

Immunogen:	PLEK antibody was raised using the N terminal of PLEK corresponding to a region with amino acids MEPKRIREGYLVKKGSVFNTWKPMWVLLLEDGIEFYKKKSDNSPKGMIPL
Specificity:	PLEK antibody was raised against the N terminal of PLEK
Purification:	Affinity purified

Target Details

Target:	Pleckstrin (PLEK)
Alternative Name:	PLEK (PLEK Products)
Background:	PLEK is a major protein kinase C substrate of platelets, its exact function is not known.
Molecular Weight:	40 kDa (MW of target protein)

Target Details

Pathways: [Inositol Metabolic Process](#), [Regulation of G-Protein Coupled Receptor Protein Signaling](#), [Regulation of Cell Size](#), [Regulation of Carbohydrate Metabolic Process](#)

Application Details

Application Notes: WB: 1 µg/mL
Optimal conditions should be determined by the investigator.

Comment: PLEK Blocking Peptide, catalog no. 33R-5943, is also available for use as a blocking control in assays to test for specificity of this PLEK antibody

Restrictions: For Research Use only

Handling

Format: Lyophilized

Reconstitution: Lyophilized powder. Add distilled water for a 1 mg/mL concentration of PLEK antibody in PBS

Concentration: Lot specific

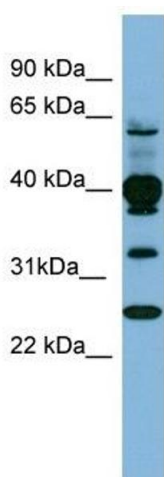
Buffer: PBS

Handling Advice: Avoid repeated freeze/thaw cycles.
Dilute only prior to immediate use.

Storage: 4 °C/-20 °C

Storage Comment: Store at 2-8 °C for short periods. For longer periods of storage, store at -20 °C.

Images



Western Blotting

Image 1. PLEK antibody used at 1 ug/ml to detect target protein.