

Datasheet for ABIN634414 **anti-ASB12 antibody (C-Term)**



[Go to Product page](#)

1 Image

Overview

Quantity:	100 µL
Target:	ASB12
Binding Specificity:	C-Term
Reactivity:	Human, Mouse, Rat
Host:	Rabbit
Clonality:	Polyclonal
Conjugate:	This ASB12 antibody is un-conjugated
Application:	Western Blotting (WB)

Product Details

Immunogen:	ASB12 antibody was raised using the C terminal of ASB12 corresponding to a region with amino acids DDKGIALLLQARATPRSLLSQVRLVRRALCQAGQPQAINQLDIPMLIS
Specificity:	ASB12 antibody was raised against the C terminal of ASB12
Purification:	Affinity purified

Target Details

Target:	ASB12
Alternative Name:	ASB12 (ASB12 Products)
Background:	ASB12 is a member of the ankyrin repeat and SOCS box-containing (ASB) family of proteins. They contain ankyrin repeat sequence and a SOCS box domain. The SOCS box serves to couple suppressor of cytokine signalling (SOCS) proteins and their binding partners with the elongin B

Target Details

and C complex, possibly targeting them for degradation. The SOCS box domain has not yet been annotated for the protein.

Molecular Weight: 34 kDa (MW of target protein)

Application Details

Application Notes: WB: 1 µg/mL
Optimal conditions should be determined by the investigator.

Comment: ASB12 Blocking Peptide, catalog no. 33R-1880, is also available for use as a blocking control in assays to test for specificity of this ASB12 antibody

Restrictions: For Research Use only

Handling

Format: Lyophilized

Reconstitution: Lyophilized powder. Add distilled water for a 1 mg/mL concentration of ASB12 antibody in PBS

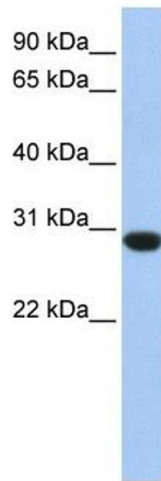
Concentration: Lot specific

Buffer: PBS

Handling Advice: Avoid repeated freeze/thaw cycles.
Dilute only prior to immediate use.

Storage: 4 °C/-20 °C

Storage Comment: Store at 2-8 °C for short periods. For longer periods of storage, store at -20 °C.



Western Blotting

Image 1. ASB12 antibody used at 1 ug/ml to detect target protein.