

Datasheet for ABIN634415  
**anti-RHOBTB1 antibody (Middle Region)**



[Go to Product page](#)

2 Images

## Overview

Quantity:	100 µL
Target:	RHOBTB1
Binding Specificity:	Middle Region
Reactivity:	Human, Mouse, Dog, Rat
Host:	Rabbit
Clonality:	Polyclonal
Conjugate:	This RHOBTB1 antibody is un-conjugated
Application:	Western Blotting (WB), Immunohistochemistry (IHC)

## Product Details

Immunogen:	RHOBTB1 antibody was raised using the middle region of RHOBTB1 corresponding to a region with amino acids DNQEYFERHRWPPVWYLKEEDHYQRVKREREKEDIALNKHRSRRKWCFWN
Specificity:	RHOBTB1 antibody was raised against the middle region of RHOBTB1
Purification:	Affinity purified

## Target Details

Target:	RHOBTB1
Alternative Name:	RHOBTB1 ( <a href="#">RHOBTB1 Products</a> )
Background:	RHOBTB1 belongs to the Rho family of the small GTPase superfamily. It contains a GTPase domain, a proline-rich region, a tandem of 2 BTB (broad complex, tramtrack, and bric-a-brac) domains, and a conserved C-terminal region. The protein plays a role in small GTPase-mediated

## Target Details

---

signal transduction and the organization of the actin filament system.

---

Molecular Weight: 77 kDa (MW of target protein)

---

## Application Details

---

Application Notes: WB: 0.25 µg/mL, IHC: 4-8 µg/mL  
Optimal conditions should be determined by the investigator.

---

Comment: RHOBTB1 Blocking Peptide, catalog no. 33R-2087, is also available for use as a blocking control in assays to test for specificity of this RHOBTB1 antibody

---

Restrictions: For Research Use only

---

## Handling

---

Format: Lyophilized

---

Reconstitution: Lyophilized powder. Add distilled water for a 1 mg/mL concentration of RHOBTB1 antibody in PBS

---

Concentration: Lot specific

---

Buffer: PBS

---

Handling Advice: Avoid repeated freeze/thaw cycles.  
Dilute only prior to immediate use.

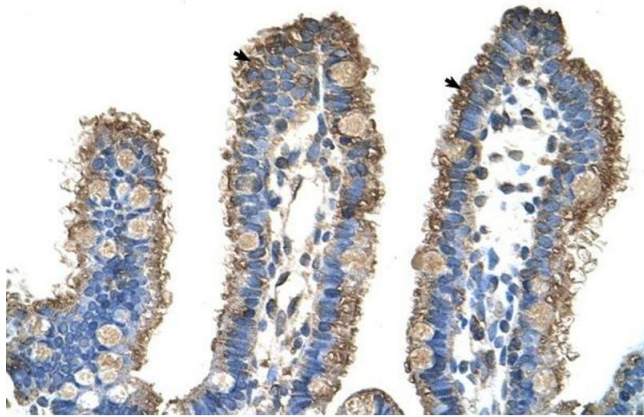
---

Storage: 4 °C/-20 °C

---

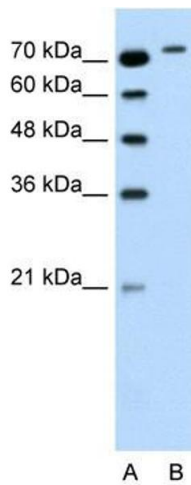
Storage Comment: Store at 2-8 °C for short periods. For longer periods of storage, store at -20 °C.

---



### Immunohistochemistry

**Image 1.** RHOBTB1 antibody was used for immunohistochemistry at a concentration of 4-8 ug/ml to stain Epithelial cells of intestinal villus (arrows) in Human Intestine. Magnification is at 400X



### Western Blotting

**Image 2.** RHOBTB1 antibody used at 0.25 ug/ml to detect target protein.