

Datasheet for ABIN634421
anti-Pkc beta 1 antibody (N-Term)



[Go to Product page](#)

1 Image

Overview

Quantity:	100 µL
Target:	Pkc beta 1
Binding Specificity:	N-Term
Reactivity:	Rat, Human, Mouse
Host:	Rabbit
Clonality:	Polyclonal
Conjugate:	This Pkc beta 1 antibody is un-conjugated
Application:	Western Blotting (WB)

Product Details

Immunogen:	PRKCB1 antibody was raised using the N terminal of PRKCB1 corresponding to a region with amino acids MADPAAGPPPSEGEESTVRFARKGALRQKNVHEVKNHKFTARFFKQPTFC
Specificity:	PRKCB1 antibody was raised against the N terminal of PRKCB1
Purification:	Affinity purified

Target Details

Target:	Pkc beta 1
Alternative Name:	PRKCB1 (Pkc beta 1 Products)
Background:	Protein kinase C (PKC) is a family of serine- and threonine-specific protein kinases that can be activated by calcium and second messenger diacylglycerol. PKC family members phosphorylate a wide variety of protein targets.

Target Details

Molecular Weight: 77 kDa (MW of target protein)

Application Details

Application Notes: WB: 1 µg/mL
Optimal conditions should be determined by the investigator.

Comment: PRKCB1 Blocking Peptide, catalog no. 33R-5625, is also available for use as a blocking control in assays to test for specificity of this PRKCB1 antibody

Restrictions: For Research Use only

Handling

Format: Lyophilized

Reconstitution: Lyophilized powder. Add distilled water for a 1 mg/mL concentration of PRKCB1 antibody in PBS

Concentration: Lot specific

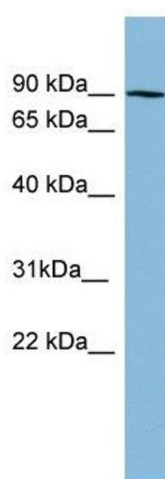
Buffer: PBS

Handling Advice: Avoid repeated freeze/thaw cycles.
Dilute only prior to immediate use.

Storage: 4 °C/-20 °C

Storage Comment: Store at 2-8 °C for short periods. For longer periods of storage, store at -20 °C.

Images



Western Blotting

Image 1. PRKCB1 antibody used at 1 ug/ml to detect target protein.