

Datasheet for ABIN634423  
**anti-PKC gamma antibody (N-Term)**



[Go to Product page](#)

1 Image

## Overview

Quantity:	100 µL
Target:	PKC gamma (PRKCG)
Binding Specificity:	N-Term
Reactivity:	Human, Mouse, Rat
Host:	Rabbit
Clonality:	Polyclonal
Conjugate:	This PKC gamma antibody is un-conjugated
Application:	Western Blotting (WB)

## Product Details

Immunogen:	PRKCG antibody was raised using the N terminal of PRKCG corresponding to a region with amino acids FVHRRRCHEFVTFECPGAGKGPQTDDPRNKHKFRLHSYSSPTFCDHCGSL
Specificity:	PRKCG antibody was raised against the N terminal of PRKCG
Purification:	Affinity purified

## Target Details

Target:	PKC gamma (PRKCG)
Alternative Name:	PRKCG ( <a href="#">PRKCG Products</a> )
Background:	Protein kinase C (PKC) is a family of serine- and threonine-specific protein kinases that can be activated by calcium and second messenger diacylglycerol. PKC family members phosphorylate a wide variety of protein targets.

## Target Details

---

Molecular Weight:	78 kDa (MW of target protein)
Pathways:	<a href="#">WNT Signaling</a> , <a href="#">EGFR Signaling Pathway</a> , <a href="#">Neurotrophin Signaling Pathway</a> , <a href="#">Thyroid Hormone Synthesis</a> , <a href="#">Myometrial Relaxation and Contraction</a> , <a href="#">G-protein mediated Events</a> , <a href="#">Positive Regulation of Response to DNA Damage Stimulus</a> , <a href="#">Interaction of EGFR with phospholipase C-gamma</a> , <a href="#">Thromboxane A2 Receptor Signaling</a> , <a href="#">VEGF Signaling</a>

## Application Details

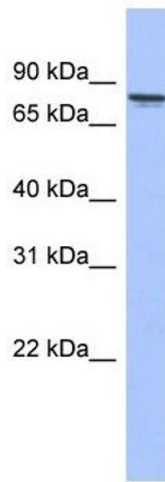
---

Application Notes:	WB: 1 µg/mL Optimal conditions should be determined by the investigator.
Comment:	PRKCG Blocking Peptide, catalog no. 33R-3124, is also available for use as a blocking control in assays to test for specificity of this PRKCG antibody
Restrictions:	For Research Use only

## Handling

---

Format:	Lyophilized
Reconstitution:	Lyophilized powder. Add distilled water for a 1 mg/mL concentration of PRKCG antibody in PBS
Concentration:	Lot specific
Buffer:	PBS
Handling Advice:	Avoid repeated freeze/thaw cycles. Dilute only prior to immediate use.
Storage:	4 °C/-20 °C
Storage Comment:	Store at 2-8 °C for short periods. For longer periods of storage, store at -20 °C.



### Western Blotting

**Image 1.** PRKCG antibody used at 1 ug/ml to detect target protein.