

Datasheet for ABIN634425
anti-PLCD1 antibody (N-Term)



[Go to Product page](#)

1 Image

Overview

Quantity:	100 µL
Target:	PLCD1
Binding Specificity:	N-Term
Reactivity:	Human, Mouse, Rat
Host:	Rabbit
Clonality:	Polyclonal
Conjugate:	This PLCD1 antibody is un-conjugated
Application:	Western Blotting (WB)

Product Details

Immunogen:	PLCD1 antibody was raised using the N terminal of PLCD1 corresponding to a region with amino acids DIQEVRMGHRTEGLEKFARDVPEDRCFSIVFKDQRNTLDLIAPSPADAQH
Specificity:	PLCD1 antibody was raised against the N terminal of PLCD1
Purification:	Affinity purified

Target Details

Target:	PLCD1
Alternative Name:	PLCD1 (PLCD1 Products)
Background:	Phosphoinositide-specific phospholipase C (PLC) acts as a signal transducer that generates 2 second messengers, diacylglycerol and inositol 1,4,5-trisphosphate, by hydrolyzing inositol phospholipids. PLC comprises a diverse family of enzymes that differ in structure and tissue

Target Details

distribution.

Molecular Weight: 86 kDa (MW of target protein)

Pathways: [WNT Signaling](#), [Myometrial Relaxation and Contraction](#), [Regulation of Carbohydrate Metabolic Process](#)

Application Details

Application Notes: WB: 1 µg/mL
Optimal conditions should be determined by the investigator.

Comment: PLCD1 Blocking Peptide, catalog no. 33R-2003, is also available for use as a blocking control in assays to test for specificity of this PLCD1 antibody

Restrictions: For Research Use only

Handling

Format: Lyophilized

Reconstitution: Lyophilized powder. Add distilled water for a 1 mg/mL concentration of PLCD1 antibody in PBS

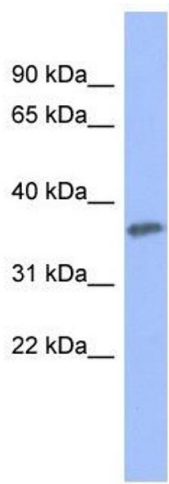
Concentration: Lot specific

Buffer: PBS

Handling Advice: Avoid repeated freeze/thaw cycles.
Dilute only prior to immediate use.

Storage: 4 °C/-20 °C

Storage Comment: Store at 2-8 °C for short periods. For longer periods of storage, store at -20 °C.



Western Blotting

Image 1. PLCD1 antibody used at 1 ug/ml to detect target protein.