

Datasheet for ABIN634429  
**anti-RAB40B antibody (Middle Region)**



[Go to Product page](#)

1 Image

## Overview

Quantity:	100 µL
Target:	RAB40B
Binding Specificity:	Middle Region
Reactivity:	Human, Mouse, Rat
Host:	Rabbit
Clonality:	Polyclonal
Conjugate:	This RAB40B antibody is un-conjugated
Application:	Western Blotting (WB)

## Product Details

Immunogen:	RAB40 B antibody was raised using the middle region of RAB40 corresponding to a region with amino acids YAERLGVTFFEVSPLCNFNITESFTELARIVLLRHGMDRLWRPSKVLSLQ
Specificity:	RAB40 B antibody was raised against the middle region of RAB40
Purification:	Affinity purified

## Target Details

Target:	RAB40B
Alternative Name:	RAB40B ( <a href="#">RAB40B Products</a> )
Background:	RAB40B has similarity to a yeast protein which suggests a role of the gene product in regulating secretory vesicles.

## Target Details

---

Molecular Weight: 31 kDa (MW of target protein)

## Application Details

---

Application Notes: WB: 1 µg/mL  
Optimal conditions should be determined by the investigator.

Comment: RAB40B Blocking Peptide, catalog no. 33R-10045, is also available for use as a blocking control in assays to test for specificity of this RAB40B antibody

Restrictions: For Research Use only

## Handling

---

Format: Lyophilized

Reconstitution: Lyophilized powder. Add distilled water for a 1 mg/mL concentration of RAB40 antibody in PBS

Concentration: Lot specific

Buffer: PBS

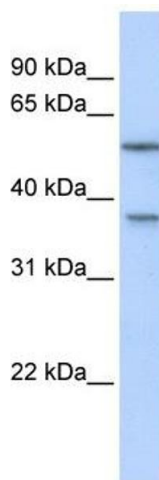
Handling Advice: Avoid repeated freeze/thaw cycles.  
Dilute only prior to immediate use.

Storage: 4 °C/-20 °C

Storage Comment: Store at 2-8 °C for short periods. For longer periods of storage, store at -20 °C.

## Images

---



### Western Blotting

**Image 1.** RAB40B antibody used at 1 ug/ml to detect target protein.