

Datasheet for ABIN634436
anti-RABL4 antibody (C-Term)



[Go to Product page](#)

1 Image

Overview

Quantity:	100 µL
Target:	RABL4 (IFT27)
Binding Specificity:	C-Term
Reactivity:	Human
Host:	Rabbit
Clonality:	Polyclonal
Conjugate:	This RABL4 antibody is un-conjugated
Application:	Western Blotting (WB)

Product Details

Immunogen:	RABL4 antibody was raised using the C terminal of RABL4 corresponding to a region with amino acids RAWALGQGLECFETSVKEMENFEAPFHCLAKQFHQLYREKVEVFRALA
Specificity:	RABL4 antibody was raised against the C terminal of RABL4
Purification:	Affinity purified

Target Details

Target:	RABL4 (IFT27)
Alternative Name:	RABL4 (IFT27 Products)
Background:	RABL4 belongs to the small GTPase superfamily, Ras family. RABL4 possesses GTPase activity By similarity.

Target Details

Molecular Weight: 20 kDa (MW of target protein)

Pathways: [Hedgehog Signaling](#)

Application Details

Application Notes: WB: 1 µg/mL
Optimal conditions should be determined by the investigator.

Comment: RABL4 Blocking Peptide, catalog no. 33R-7831, is also available for use as a blocking control in assays to test for specificity of this RABL4 antibody

Restrictions: For Research Use only

Handling

Format: Lyophilized

Reconstitution: Lyophilized powder. Add distilled water for a 1 mg/mL concentration of RABL4 antibody in PBS

Concentration: Lot specific

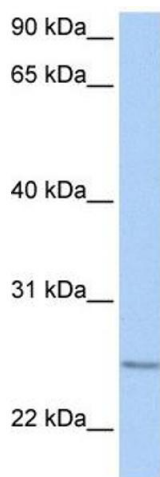
Buffer: PBS

Handling Advice: Avoid repeated freeze/thaw cycles.
Dilute only prior to immediate use.

Storage: 4 °C/-20 °C

Storage Comment: Store at 2-8 °C for short periods. For longer periods of storage, store at -20 °C.

Images



Western Blotting

Image 1. RABL4 antibody used at 1 µg/ml to detect target protein.