

Datasheet for ABIN634437

**anti-Calcyphosine antibody (N-Term)**[Go to Product page](#)**1** Image

## Overview

Quantity:	100 µL
Target:	Calcyphosine (CAPS)
Binding Specificity:	N-Term
Reactivity:	Human
Host:	Rabbit
Clonality:	Polyclonal
Conjugate:	This Calcyphosine antibody is un-conjugated
Application:	Western Blotting (WB)

## Product Details

Immunogen:	CAPS antibody was raised using the N terminal of CAPS corresponding to a region with amino acids DAVDATMEKLRQAQLSRGASGIQGLARFFRQLDRDGSRSRLDADEFRRQGLA
Specificity:	CAPS antibody was raised against the N terminal of CAPS
Purification:	Affinity purified

## Target Details

Target:	Calcyphosine (CAPS)
Alternative Name:	CAPS ( <a href="#">CAPS Products</a> )
Background:	CAPS is a calcium-binding protein, which may play a role in the regulation of ion transport. A similar protein was first described as a potentially important regulatory protein in the dog thyroid and was termed as R2D5 antigen in rabbit.

## Target Details

---

Molecular Weight: 21 kDa (MW of target protein)

## Application Details

---

Application Notes: WB: 1 µg/mL  
Optimal conditions should be determined by the investigator.

Comment: CAPS Blocking Peptide, catalog no. 33R-1864, is also available for use as a blocking control in assays to test for specificity of this CAPS antibody

Restrictions: For Research Use only

## Handling

---

Format: Lyophilized

Reconstitution: Lyophilized powder. Add distilled water for a 1 mg/mL concentration of CAPS antibody in PBS

Concentration: Lot specific

Buffer: PBS

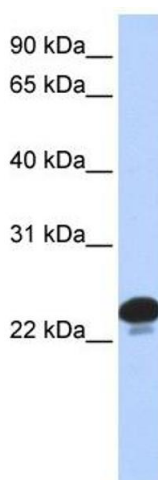
Handling Advice: Avoid repeated freeze/thaw cycles.  
Dilute only prior to immediate use.

Storage: 4 °C/-20 °C

Storage Comment: Store at 2-8 °C for short periods. For longer periods of storage, store at -20 °C.

## Images

---



### Western Blotting

**Image 1.** CAPS antibody used at 1 ug/ml to detect target protein.