

Datasheet for ABIN634446
anti-RAB5B antibody (N-Term)



[Go to Product page](#)

1 Image

Overview

| | |
|----------------------|--------------------------------------|
| Quantity: | 100 µL |
| Target: | RAB5B |
| Binding Specificity: | N-Term |
| Reactivity: | Human, Mouse, Rat |
| Host: | Rabbit |
| Clonality: | Polyclonal |
| Conjugate: | This RAB5B antibody is un-conjugated |
| Application: | Western Blotting (WB) |

Product Details

| | |
|---------------|---|
| Immunogen: | RAB5 B antibody was raised using the N terminal of RAB5 corresponding to a region with amino acids MTSRSTARPNQPPQASKICQFKLVLLGESAVGKSSLVLRVFKGQFHEYQE |
| Specificity: | RAB5 B antibody was raised against the N terminal of RAB5 |
| Purification: | Affinity purified |

Target Details

| | |
|-------------------|--|
| Target: | RAB5B |
| Alternative Name: | RAB5B (RAB5B Products) |
| Background: | RAB5B play a role in protein transport. RAB5B is probably involved in vesicular traffic. |
| Molecular Weight: | 24 kDa (MW of target protein) |

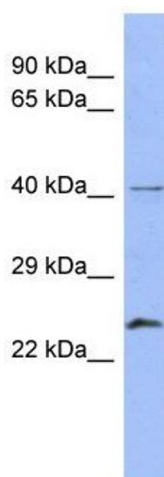
Application Details

| | |
|--------------------|--|
| Application Notes: | WB: 1 µg/mL Optimal conditions should be determined by the investigator. |
| Comment: | RAB5B Blocking Peptide, catalog no. 33R-6565, is also available for use as a blocking control in assays to test for specificity of this RAB5B antibody |
| Restrictions: | For Research Use only |

Handling

| | |
|------------------|---|
| Format: | Lyophilized |
| Reconstitution: | Lyophilized powder. Add distilled water for a 1 mg/mL concentration of RAB0 antibody in PBS |
| Concentration: | Lot specific |
| Buffer: | PBS |
| Handling Advice: | Avoid repeated freeze/thaw cycles. Dilute only prior to immediate use. |
| Storage: | 4 °C/-20 °C |
| Storage Comment: | Store at 2-8 °C for short periods. For longer periods of storage, store at -20 °C. |

Images



Western Blotting

Image 1. RAB5B antibody used at 1 ug/ml to detect target protein.