

Datasheet for ABIN634451
anti-NKIRAS1 antibody (N-Term)



[Go to Product page](#)

1 Image

Overview

Quantity:	100 µL
Target:	NKIRAS1
Binding Specificity:	N-Term
Reactivity:	Human, Mouse, Rat
Host:	Rabbit
Clonality:	Polyclonal
Conjugate:	This NKIRAS1 antibody is un-conjugated
Application:	Western Blotting (WB)

Product Details

Immunogen:	NKIRAS1 antibody was raised using the N terminal of NKIRAS1 corresponding to a region with amino acids CETMEDVYMASVETDRGVKEQLHLYDTRGLQEGVELPKHYFSFADGFVLV
Specificity:	NKIRAS1 antibody was raised against the N terminal of NKIRAS1
Purification:	Affinity purified

Target Details

Target:	NKIRAS1
Alternative Name:	NKIRAS1 (NKIRAS1 Products)
Background:	NKIRAS1 is an atypical Ras-like protein that acts as a potent regulator of NF-kappa-B activity by preventing the degradation of NF-kappa-B inhibitor beta (NFKBIB) by most signals, explaining why NFKBIB is more resistant to degradation. NKIRAS1 may act by blocking phosphorylation of

Target Details

NFKBIB and mediating cytoplasmic retention of p65/RELA NF-kappa-B subunit. It is unclear whether it acts as a GTPase. Both GTP- and GDP-bound forms block phosphorylation of NFKBIB.

Molecular Weight: 22 kDa (MW of target protein)

Application Details

Application Notes: WB: 1 µg/mL
Optimal conditions should be determined by the investigator.

Comment: NKIRAS1 Blocking Peptide, catalog no. 33R-1680, is also available for use as a blocking control in assays to test for specificity of this NKIRAS1 antibody

Restrictions: For Research Use only

Handling

Format: Lyophilized

Reconstitution: Lyophilized powder. Add distilled water for a 1 mg/mL concentration of NKIRAS1 antibody in PBS

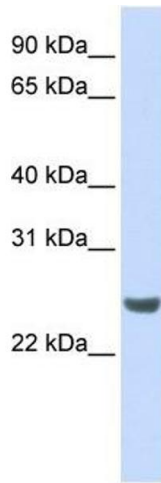
Concentration: Lot specific

Buffer: PBS

Handling Advice: Avoid repeated freeze/thaw cycles.
Dilute only prior to immediate use.

Storage: 4 °C/-20 °C

Storage Comment: Store at 2-8 °C for short periods. For longer periods of storage, store at -20 °C.



Western Blotting

Image 1. NKIRAS1 antibody used at 1 ug/ml to detect target protein.