

Datasheet for ABIN634452
anti-ASB6 antibody (Middle Region)



[Go to Product page](#)

1 Image

Overview

Quantity:	100 µL
Target:	ASB6
Binding Specificity:	Middle Region
Reactivity:	Human, Mouse, Rat
Host:	Rabbit
Clonality:	Polyclonal
Conjugate:	This ASB6 antibody is un-conjugated
Application:	Western Blotting (WB)

Product Details

Immunogen:	ASB6 antibody was raised using the middle region of ASB6 corresponding to a region with amino acids LKMAELGLTRAADVLLRHGANLNFEDPVYTYTALHIAVLRNQPDMVELLV
Specificity:	ASB6 antibody was raised against the middle region of ASB6
Purification:	Affinity purified

Target Details

Target:	ASB6
Alternative Name:	ASB6 (ASB6 Products)
Background:	ASB6 belongs to a family of ankyrin repeat proteins that, along with four other protein families, contain a C-terminal SOCS box motif. Growing evidence suggests that the SOCS box, similar to the F-box, acts as a bridge between specific substrate-binding domains and the more generic

Target Details

proteins that comprise a large family of E3 ubiquitin protein ligases.

Molecular Weight: 46 kDa (MW of target protein)

Application Details

Application Notes: WB: 1 µg/mL
Optimal conditions should be determined by the investigator.

Comment: ASB6 Blocking Peptide, catalog no. 33R-5090, is also available for use as a blocking control in assays to test for specificity of this ASB6 antibody

Restrictions: For Research Use only

Handling

Format: Lyophilized

Reconstitution: Lyophilized powder. Add distilled water for a 1 mg/mL concentration of ASB6 antibody in PBS

Concentration: Lot specific

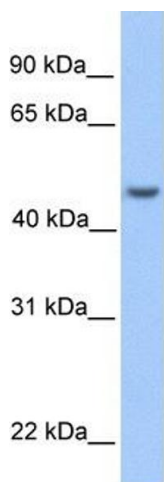
Buffer: PBS

Handling Advice: Avoid repeated freeze/thaw cycles.
Dilute only prior to immediate use.

Storage: 4 °C/-20 °C

Storage Comment: Store at 2-8 °C for short periods. For longer periods of storage, store at -20 °C.

Images



Western Blotting

Image 1. ASB6 antibody used at 1 ug/ml to detect target protein.