

Datasheet for ABIN634468 **anti-AIMP1 antibody**



[Go to Product page](#)

1 Image

Overview

Quantity:	100 µL
Target:	AIMP1
Reactivity:	Human, Dog
Host:	Rabbit
Clonality:	Polyclonal
Conjugate:	This AIMP1 antibody is un-conjugated
Application:	Western Blotting (WB)

Product Details

Immunogen:	SCYE1 antibody was raised using a synthetic peptide corresponding to a region with amino acids LLKEKAILQATLREEKKLRVENAKLKKKEIEELKQELIQAEIQNGVKQIPF
Purification:	Affinity purified

Target Details

Target:	AIMP1
Alternative Name:	SCYE1 (AIMP1 Products)
Background:	SCYE1 is a cytokine that is specifically induced by apoptosis. The release of this cytokine renders the tumor-associated vasculature sensitive to tumor necrosis factor. The precursor of SCYE1 (pro-SCYE1) is identical to the p43 subunit, which is associated with the multi-tRNA synthetase complex. Therefore, pro-SCYE1 may function in binding RNA as part of the tRNA synthetase complex in normal cells and in stimulating inflammatory responses after proteolytic

Target Details

cleavage in tumor cells.

Molecular Weight: 34 kDa (MW of target protein)

Application Details

Application Notes: WB: 0.25 µg/mL

Optimal conditions should be determined by the investigator.

Comment: SCYE1 Blocking Peptide, catalog no. 33R-5153, is also available for use as a blocking control in assays to test for specificity of this SCYE1 antibody

Restrictions: For Research Use only

Handling

Format: Lyophilized

Reconstitution: Lyophilized powder. Add distilled water for a 1 mg/mL concentration of SCYE1 antibody in PBS

Concentration: Lot specific

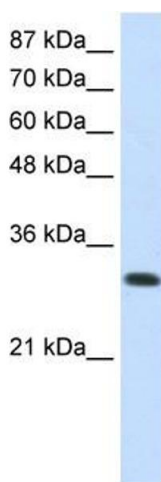
Buffer: PBS

Handling Advice: Avoid repeated freeze/thaw cycles.

Storage: 4 °C/-20 °C

Storage Comment: Store at 2-8 °C for short periods. For longer periods of storage, store at -20 °C.

Images



Western Blotting

Image 1. SCYE1 antibody used at 0.25 µg/ml to detect target protein.