

Datasheet for ABIN634469
anti-PRKRA antibody (Middle Region)



[Go to Product page](#)

2 Images

Overview

Quantity:	100 µL
Target:	PRKRA
Binding Specificity:	Middle Region
Reactivity:	Human, Mouse, Rat, Dog
Host:	Rabbit
Clonality:	Polyclonal
Conjugate:	This PRKRA antibody is un-conjugated
Application:	Western Blotting (WB), Immunohistochemistry (IHC)

Product Details

Immunogen:	PRKRA antibody was raised using the middle region of PRKRA corresponding to a region with amino acids RLPEYTLSQEGGPAHKREYTTICRLESFMETGKGASKKQAKRNAAEKFLA
Specificity:	PRKRA antibody was raised against the middle region of PRKRA
Purification:	Affinity purified

Target Details

Target:	PRKRA
Alternative Name:	PRKRA (PRKRA Products)
Background:	PRKRA contains 3 DRBM (double-stranded RNA-binding) domains. It appears to have a pro-apoptotic function that may be suppressed in the presence of growth factor and activates EIF2AK2 in absence of double stranded RNA (dsRNA).

Target Details

Molecular Weight: 34 kDa (MW of target protein)

Pathways: [Regulatory RNA Pathways](#)

Application Details

Application Notes: WB: 1 µg/mL, IHC: 4-8 µg/mL
Optimal conditions should be determined by the investigator.

Comment: PRKRA Blocking Peptide, catalog no. 33R-8043, is also available for use as a blocking control in assays to test for specificity of this PRKRA antibody

Restrictions: For Research Use only

Handling

Format: Lyophilized

Reconstitution: Lyophilized powder. Add distilled water for a 1 mg/mL concentration of PRKRA antibody in PBS

Concentration: Lot specific

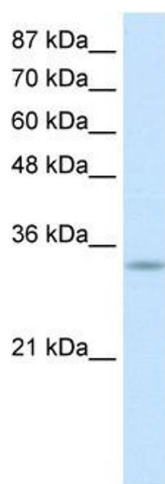
Buffer: PBS

Handling Advice: Avoid repeated freeze/thaw cycles.
Dilute only prior to immediate use.

Storage: 4 °C/-20 °C

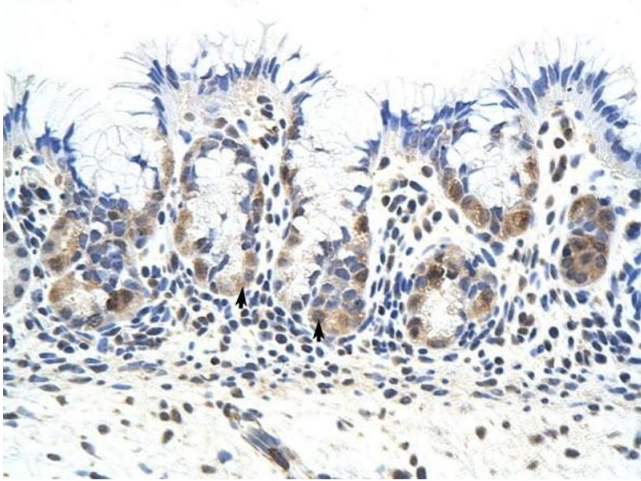
Storage Comment: Store at 2-8 °C for short periods. For longer periods of storage, store at -20 °C.

Images



Western Blotting

Image 1. PRKRA antibody used at 1 µg/ml to detect target protein.



Immunohistochemistry

Image 2. PRKRA antibody was used for immunohistochemistry at a concentration of 4-8 ug/ml to stain Epithelial cells of fundic gland (arrows) in Human Stomach. Magnification is at 400X