

Datasheet for ABIN634475
anti-WWP1 antibody (N-Term)



[Go to Product page](#)

1 Image

Overview

Quantity:	100 µL
Target:	WWP1
Binding Specificity:	N-Term
Reactivity:	Human
Host:	Rabbit
Clonality:	Polyclonal
Conjugate:	This WWP1 antibody is un-conjugated
Application:	Western Blotting (WB)

Product Details

Immunogen:	WWP1 antibody was raised using the N terminal of WWP1 corresponding to a region with amino acids ATASPRSDTSNNHSGRLQLQVTVSSAKLKRKKNWFGTAIYTEVWVDGEIT
Specificity:	WWP1 antibody was raised against the N terminal of WWP1
Purification:	Affinity purified

Target Details

Target:	WWP1
Alternative Name:	WWP1 (WWP1 Products)
Background:	WW domain-containing proteins are found in all eukaryotes and play an important role in the regulation of a wide variety of cellular functions such as protein degradation, transcription, and RNA splicing. WWP1 is a protein which contains 4 tandem WW domains and a HECT

Target Details

(homologous to the E6-associated protein carboxyl terminus) domain. WWP1 belongs to a family of NEDD4-like proteins, which are E3 ubiquitin-ligase molecules and regulate key trafficking decisions, including targeting of proteins to proteosomes or lysosomes. WW domain-containing proteins are found in all eukaryotes and play an important role in the regulation of a wide variety of cellular functions such as protein degradation, transcription, and RNA splicing.

Molecular Weight: 105 kDa (MW of target protein)

Application Details

Application Notes: WB: 1 µg/mL
Optimal conditions should be determined by the investigator.

Comment: WWP1 Blocking Peptide, catalog no. 33R-1550, is also available for use as a blocking control in assays to test for specificity of this WWP1 antibody

Restrictions: For Research Use only

Handling

Format: Lyophilized

Reconstitution: Lyophilized powder. Add distilled water for a 1 mg/mL concentration of WWP1 antibody in PBS

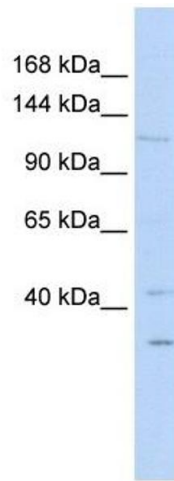
Concentration: Lot specific

Buffer: PBS

Handling Advice: Avoid repeated freeze/thaw cycles.
Dilute only prior to immediate use.

Storage: 4 °C/-20 °C

Storage Comment: Store at 2-8 °C for short periods. For longer periods of storage, store at -20 °C.



Western Blotting

Image 1. WWP1 antibody used at 1 ug/ml to detect target protein.