

Datasheet for ABIN634486
anti-BPIFA1 antibody (Middle Region)



[Go to Product page](#)

1 Image

Overview

Quantity:	100 µL
Target:	BPIFA1
Binding Specificity:	Middle Region
Reactivity:	Human, Rat, Mouse, Dog
Host:	Rabbit
Clonality:	Polyclonal
Conjugate:	This BPIFA1 antibody is un-conjugated
Application:	Western Blotting (WB)

Product Details

Immunogen:	PLUNC antibody was raised using the middle region of PLUNC corresponding to a region with amino acids GLNNIIDIKVTDPQLLELGLVQSPDGHRLYVTIPLGIKLVNTPLVGASL
Specificity:	PLUNC antibody was raised against the middle region of PLUNC
Purification:	Affinity purified

Target Details

Target:	BPIFA1
Alternative Name:	PLUNC (BPIFA1 Products)
Background:	PLUNC is the human homolog of murine plunc and is specifically expressed in the upper airways and nasopharyngeal regions. The exact biological function of this protein is not known, however, it has been suggested to be involved in inflammatory responses to irritants in the

Target Details

upper airways. It may also serve as a potential molecular marker for detection of micrometastasis in non-small-cell lung cancer.

Molecular Weight: 28 kDa (MW of target protein)

Application Details

Application Notes: WB: 0.25 µg/mL
Optimal conditions should be determined by the investigator.

Comment: PLUNC Blocking Peptide, catalog no. 33R-3412, is also available for use as a blocking control in assays to test for specificity of this PLUNC antibody

Restrictions: For Research Use only

Handling

Format: Lyophilized

Reconstitution: Lyophilized powder. Add distilled water for a 1 mg/mL concentration of PLUNC antibody in PBS

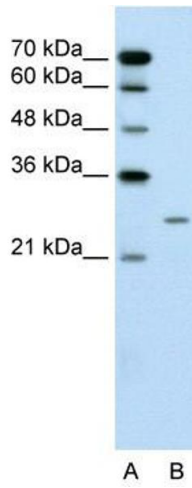
Concentration: Lot specific

Buffer: PBS

Handling Advice: Avoid repeated freeze/thaw cycles.
Dilute only prior to immediate use.

Storage: 4 °C/-20 °C

Storage Comment: Store at 2-8 °C for short periods. For longer periods of storage, store at -20 °C.



Western Blotting

Image 1. PLUNC antibody used at 0.25 ug/ml to detect target protein.