

Datasheet for ABIN634490
anti-C4BPB antibody (N-Term)

2 Images



[Go to Product page](#)

Overview

Quantity:	100 µL
Target:	C4BPB
Binding Specificity:	N-Term
Reactivity:	Human
Host:	Rabbit
Clonality:	Polyclonal
Conjugate:	This C4BPB antibody is un-conjugated
Application:	Western Blotting (WB), Immunohistochemistry (IHC)

Product Details

Immunogen:	C4 BPB antibody was raised using the N terminal of C4 PB corresponding to a region with amino acids CCLMVAVRWVSASDAEHCPPELPPVDNSIFVAKEVEGQILGTYVCIKGYHLV
Specificity:	C4 BPB antibody was raised against the N terminal of C4 PB
Purification:	Affinity purified

Target Details

Target:	C4BPB
Alternative Name:	C4BPB (C4BPB Products)
Background:	C4BPB is a member of a superfamily of proteins composed predominantly of tandemly arrayed short consensus repeats of approximately 60 amino acids. A single, unique beta-chain encoded by this gene assembles with seven identical alpha-chains into the predominant isoform of C4b-

Target Details

binding protein, a multimeric protein that controls activation of the complement cascade through the classical pathway. C4b-binding protein has a regulatory role in the coagulation system also, mediated through the beta-chain binding of protein S, a vitamin K-dependent protein that serves as a cofactor of activated protein C.

Molecular Weight: 28 kDa (MW of target protein)

Pathways: [Complement System](#)

Application Details

Application Notes: WB: 1 µg/mL, IHC: 4-8 µg/mL
Optimal conditions should be determined by the investigator.

Comment: C4BPB Blocking Peptide, catalog no. 33R-1652, is also available for use as a blocking control in assays to test for specificity of this C4BPB antibody

Restrictions: For Research Use only

Handling

Format: Lyophilized

Reconstitution: Lyophilized powder. Add distilled water for a 1 mg/mL concentration of C0 PB antibody in PBS

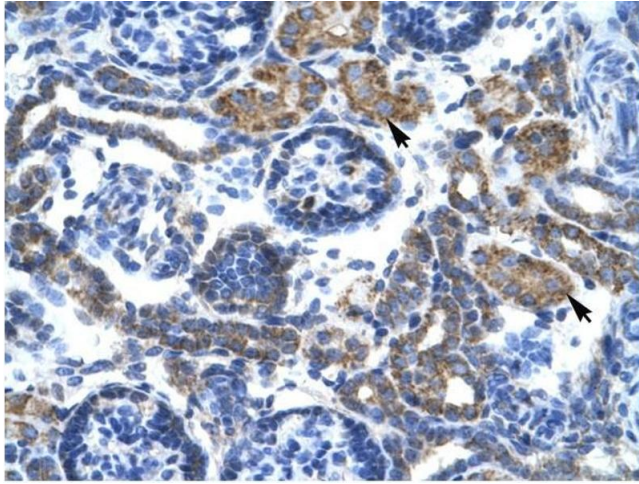
Concentration: Lot specific

Buffer: PBS

Handling Advice: Avoid repeated freeze/thaw cycles.
Dilute only prior to immediate use.

Storage: 4 °C/-20 °C

Storage Comment: Store at 2-8 °C for short periods. For longer periods of storage, store at -20 °C.



Immunohistochemistry

Image 1. C4BPB antibody was used for immunohistochemistry at a concentration of 4-8 ug/ml to stain Epithelial cells of renal tubule (arrows) in Human Kidney. Magnification is at 400X



Western Blotting

Image 2. C4BPB antibody used at 1 ug/ml to detect target protein.