

Datasheet for ABIN634492  
**anti-MASP2 antibody (N-Term)**



[Go to Product page](#)

1 Image

## Overview

Quantity:	100 µL
Target:	MASP2
Binding Specificity:	N-Term
Reactivity:	Human, Mouse
Host:	Rabbit
Clonality:	Polyclonal
Conjugate:	This MASP2 antibody is un-conjugated
Application:	Western Blotting (WB)

## Product Details

Immunogen:	MASP2 antibody was raised using the N terminal of MASP2 corresponding to a region with amino acids FPGEYANDQERRWTLTAPPGYRLRLYFTHFDLELSHLCEYDFVKLSSGAK
Specificity:	MASP2 antibody was raised against the N terminal of MASP2
Purification:	Affinity purified

## Target Details

Target:	MASP2
Alternative Name:	MASP2 ( <a href="#">MASP2 Products</a> )
Background:	The Ra-reactive factor (RARF) is a complement-dependent bactericidal factor that binds to the Ra and R2 polysaccharides expressed by certain enterobacteria.

## Target Details

Molecular Weight: 27 kDa (MW of target protein)

Pathways: [Complement System](#)

## Application Details

Application Notes: WB: 1 µg/mL

Optimal conditions should be determined by the investigator.

Comment: MASP2 Blocking Peptide, catalog no. 33R-3017, is also available for use as a blocking control in assays to test for specificity of this MASP2 antibody

Restrictions: For Research Use only

## Handling

Format: Lyophilized

Reconstitution: Lyophilized powder. Add distilled water for a 1 mg/mL concentration of MASP2 antibody in PBS

Concentration: Lot specific

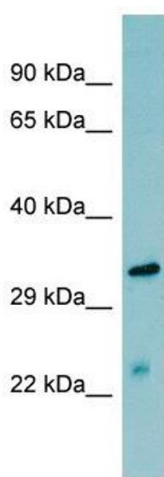
Buffer: PBS

Handling Advice: Avoid repeated freeze/thaw cycles.  
Dilute only prior to immediate use.

Storage: 4 °C/-20 °C

Storage Comment: Store at 2-8 °C for short periods. For longer periods of storage, store at -20 °C.

## Images



### Western Blotting

**Image 1.** MASP2 antibody used at 1 µg/ml to detect target protein.