

Datasheet for ABIN634493  
**anti-CHIA antibody (N-Term)**



[Go to Product page](#)

1 Image

## Overview

Quantity:	100 µL
Target:	CHIA
Binding Specificity:	N-Term
Reactivity:	Human, Mouse, Rat
Host:	Rabbit
Clonality:	Polyclonal
Conjugate:	This CHIA antibody is un-conjugated
Application:	Western Blotting (WB)

## Product Details

Immunogen:	CHIA antibody was raised using the N terminal of CHIA corresponding to a region with amino acids MVSTPENRQTFITSVIKFLRQYEFDGLDFDWEYPGSRGSPQDKHLFTVL
Specificity:	CHIA antibody was raised against the N terminal of CHIA
Purification:	Affinity purified

## Target Details

Target:	CHIA
Alternative Name:	CHIA ( <a href="#">CHIA Products</a> )
Background:	CHIA belongs to the glycosyl hydrolase 18 family. Chitinase class II subfamily. It contains 1 chitin-binding type-2 domain. The protein degrades chitin and chitotriose. And it may participate in the defense against nematodes and other pathogens.

## Target Details

---

Molecular Weight: 40 kDa (MW of target protein)

## Application Details

---

Application Notes: WB: 1 µg/mL  
Optimal conditions should be determined by the investigator.

Comment: CHIA Blocking Peptide, catalog no. 33R-6610, is also available for use as a blocking control in assays to test for specificity of this CHIA antibody

Restrictions: For Research Use only

## Handling

---

Format: Lyophilized

Reconstitution: Lyophilized powder. Add distilled water for a 1 mg/mL concentration of CHIA antibody in PBS

Concentration: Lot specific

Buffer: PBS

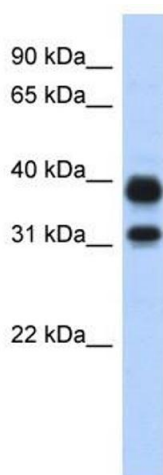
Handling Advice: Avoid repeated freeze/thaw cycles.  
Dilute only prior to immediate use.

Storage: 4 °C/-20 °C

Storage Comment: Store at 2-8 °C for short periods. For longer periods of storage, store at -20 °C.

## Images

---



### Western Blotting

**Image 1.** CHIA antibody used at 1 ug/ml to detect target protein.