

Datasheet for ABIN634511

anti-Angiotensin II Type-1 Receptor antibody (N-Term)[Go to Product page](#)**1** Image

Overview

Quantity:	100 µL
Target:	Angiotensin II Type-1 Receptor (AGTR1)
Binding Specificity:	N-Term
Reactivity:	Human, Rat, Mouse, Dog
Host:	Rabbit
Clonality:	Polyclonal
Conjugate:	This Angiotensin II Type-1 Receptor antibody is un-conjugated
Application:	Western Blotting (WB)

Product Details

Immunogen:	AGTR1 antibody was raised using the N terminal of AGTR1 corresponding to a region with amino acids ILNSSTEDGIKRIQDDCPKAGRHNYIFVMIPTLYSIIFVVGIFGNSLWVI
Specificity:	AGTR1 antibody was raised against the N terminal of AGTR1
Purification:	Affinity purified

Target Details

Target:	Angiotensin II Type-1 Receptor (AGTR1)
Alternative Name:	AGTR1 (AGTR1 Products)
Background:	Angiotensin II is a potent vasopressor hormone and a primary regulator of aldosterone secretion. It is an important effector controlling blood pressure and volume in the cardiovascular system. It acts through at least two types of receptors. AGTR1 is the type 1

Target Details

receptor which is thought to mediate the major cardiovascular effects of angiotensin II.

Molecular Weight: 41 kDa (MW of target protein)

Pathways: [JAK-STAT Signaling](#), [ACE Inhibitor Pathway](#), [Regulation of Systemic Arterial Blood Pressure by Hormones](#), [Feeding Behaviour](#)

Application Details

Application Notes: WB: 1 µg/mL
Optimal conditions should be determined by the investigator.

Comment: AGTR1 Blocking Peptide, catalog no. 33R-4056, is also available for use as a blocking control in assays to test for specificity of this AGTR1 antibody

Restrictions: For Research Use only

Handling

Format: Lyophilized

Reconstitution: Lyophilized powder. Add distilled water for a 1 mg/mL concentration of AGTR1 antibody in PBS

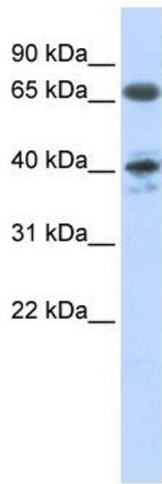
Concentration: Lot specific

Buffer: PBS

Handling Advice: Avoid repeated freeze/thaw cycles.
Dilute only prior to immediate use.

Storage: 4 °C/-20 °C

Storage Comment: Store at 2-8 °C for short periods. For longer periods of storage, store at -20 °C.



Western Blotting

Image 1. AGTR1 antibody used at 1 ug/ml to detect target protein.