

Datasheet for ABIN634516
anti-Ectodysplasin A antibody (Middle Region)



[Go to Product page](#)

1 Image

Overview

Quantity:	100 µL
Target:	Ectodysplasin A (EDA)
Binding Specificity:	Middle Region
Reactivity:	Human, Mouse, Rat, Dog
Host:	Rabbit
Clonality:	Polyclonal
Conjugate:	This Ectodysplasin A antibody is un-conjugated
Application:	Western Blotting (WB)

Product Details

Immunogen:	Ectodysplasin A antibody was raised using the middle region of EDA corresponding to a region with amino acids GPPGPPGPQGPPGLQGPSGAADKAGTRENQPAVVHLQGQGSIAIQVKNLDS
Specificity:	Ectodysplasin A antibody was raised against the middle region of EDA
Purification:	Affinity purified

Target Details

Target:	Ectodysplasin A (EDA)
Alternative Name:	Ectodysplasin A (EDA Products)
Background:	EDA is a type II membrane protein that can be cleaved by furin to produce a secreted form. It belongs to the tumor necrosis factor family, acts as a homotrimer and may be involved in cell-cell signaling during the development of ectodermal organs. Defects in this gene are a cause of

Target Details

ectodermal dysplasia, anhidrotic, which is also known as X-linked hypohidrotic ectodermal dysplasia. Several transcript variants encoding many different isoforms have been found for this gene.

Molecular Weight: 41 kDa (MW of target protein)

Pathways: [Tube Formation](#)

Application Details

Application Notes: WB: 1 µg/mL
Optimal conditions should be determined by the investigator.

Comment: Ectodysplasin A Blocking Peptide, catalog no. 33R-3477, is also available for use as a blocking control in assays to test for specificity of this Ectodysplasin A antibody

Restrictions: For Research Use only

Handling

Format: Lyophilized

Reconstitution: Lyophilized powder. Add distilled water for a 1 mg/mL concentration of EDA antibody in PBS

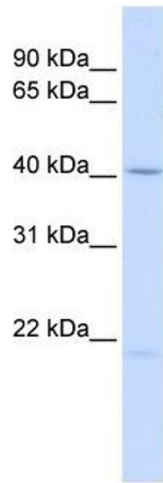
Concentration: Lot specific

Buffer: PBS

Handling Advice: Avoid repeated freeze/thaw cycles.
Dilute only prior to immediate use.

Storage: 4 °C/-20 °C

Storage Comment: Store at 2-8 °C for short periods. For longer periods of storage, store at -20 °C.



Western Blotting

Image 1. Ectodysplasin A antibody used at 1 ug/ml to detect target protein.