

Datasheet for ABIN634524  
**anti-FKBP8 antibody (C-Term)**



[Go to Product page](#)

1 Image

## Overview

Quantity:	100 µL
Target:	FKBP8
Binding Specificity:	C-Term
Reactivity:	Human, Mouse, Rat
Host:	Rabbit
Clonality:	Polyclonal
Conjugate:	This FKBP8 antibody is un-conjugated
Application:	Western Blotting (WB)

## Product Details

Immunogen:	FKBP8 antibody was raised using the C terminal of FKBP8 corresponding to a region with amino acids AIPILRAALKLEPSNKTIIHAELSKLVKKHAAQRSTETALYRKMLGNPSRL
Specificity:	FKBP8 antibody was raised against the C terminal of FKBP8
Purification:	Affinity purified

## Target Details

Target:	FKBP8
Alternative Name:	FKBP8 ( <a href="#">FKBP8 Products</a> )
Background:	FKBP8 is a member of the immunophilin protein family, which play a role in immunoregulation and basic cellular processes involving protein folding and trafficking. Unlike the other members of the family, it does not seem to have PPlase/rotamase activity. It may have a role in neurons

## Target Details

---

associated with memory function.

Molecular Weight: 45 kDa (MW of target protein)

Pathways: [Autophagy](#)

## Application Details

---

Application Notes: WB: 1 µg/mL

Optimal conditions should be determined by the investigator.

Comment: FKBP8 Blocking Peptide, catalog no. 33R-1277, is also available for use as a blocking control in assays to test for specificity of this FKBP8 antibody

Restrictions: For Research Use only

## Handling

---

Format: Lyophilized

Reconstitution: Lyophilized powder. Add distilled water for a 1 mg/mL concentration of FKBP8 antibody in PBS

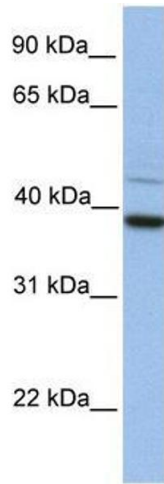
Concentration: Lot specific

Buffer: PBS

Handling Advice: Avoid repeated freeze/thaw cycles.  
Dilute only prior to immediate use.

Storage: 4 °C/-20 °C

Storage Comment: Store at 2-8 °C for short periods. For longer periods of storage, store at -20 °C.



**Image 1.**