

Datasheet for ABIN634526  
**anti-RHOT1 antibody (N-Term)**

3 Images



[Go to Product page](#)

## Overview

Quantity:	100 µL
Target:	RHOT1
Binding Specificity:	N-Term
Reactivity:	Human, Mouse, Dog
Host:	Rabbit
Clonality:	Polyclonal
Conjugate:	This RHOT1 antibody is un-conjugated
Application:	Western Blotting (WB), Immunohistochemistry (IHC)

## Product Details

Immunogen:	RHOT1 antibody was raised using the N terminal of RHOT1 corresponding to a region with amino acids MKKDVRILLVGEPRVGKTSLIMSLVSEEFPEEVPPRAEEITIPADVTPER
Specificity:	RHOT1 antibody was raised against the N terminal of RHOT1
Purification:	Affinity purified

## Target Details

Target:	RHOT1
Alternative Name:	RHOT1 ( <a href="#">RHOT1 Products</a> )
Background:	Mitochondrial GTPase involved in mitochondrial trafficking. RHOT1 is probably involved in control of anterograde transport of mitochondria and their subcellular distribution.

## Target Details

---

Molecular Weight: 71 kDa (MW of target protein)

## Application Details

---

Application Notes: WB: 0.25 µg/mL, IHC: 4-8 µg/mL  
Optimal conditions should be determined by the investigator.

Comment: RHOT1 Blocking Peptide, catalog no. 33R-6147, is also available for use as a blocking control in assays to test for specificity of this RHOT1 antibody

Restrictions: For Research Use only

## Handling

---

Format: Lyophilized

Reconstitution: Lyophilized powder. Add distilled water for a 1 mg/mL concentration of RHOT1 antibody in PBS

Concentration: Lot specific

Buffer: PBS

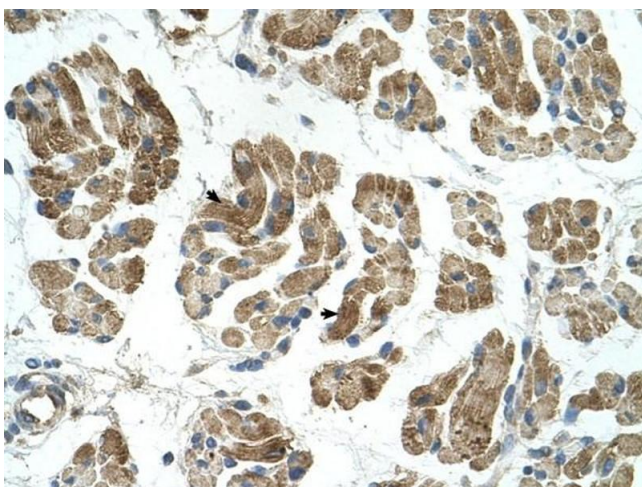
Handling Advice: Avoid repeated freeze/thaw cycles.  
Dilute only prior to immediate use.

Storage: 4 °C/-20 °C

Storage Comment: Store at 2-8 °C for short periods. For longer periods of storage, store at -20 °C.

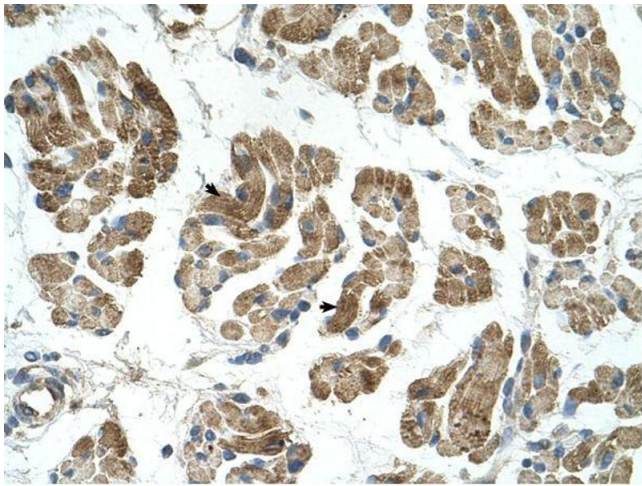
## Images

---



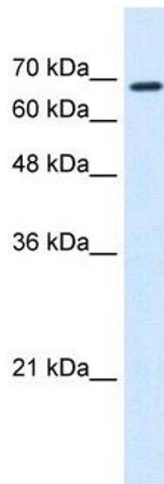
### Immunohistochemistry

**Image 1.** RHOT1 antibody was used for immunohistochemistry at a concentration of 4-8 ug/ml to stain Skeletal muscle cells (arrows) in Human Muscle. Magnification is at 400X



### Immunohistochemistry

**Image 2.** RHOT1 antibody was used for immunohistochemistry at a concentration of 4-8 ug/ml. Magnification is at 400X



### Western Blotting

**Image 3.** RHOT1 antibody used at 0.25 ug/ml to detect target protein.