

Datasheet for ABIN634528 **anti-ADCY6 antibody (C-Term)**



[Go to Product page](#)

1 Image

Overview

Quantity:	100 µL
Target:	ADCY6
Binding Specificity:	C-Term
Reactivity:	Human, Mouse, Rat
Host:	Rabbit
Clonality:	Polyclonal
Conjugate:	This ADCY6 antibody is un-conjugated
Application:	Western Blotting (WB)

Product Details

Immunogen:	ADCY6 antibody was raised using the C terminal of ADCY6 corresponding to a region with amino acids LIYLVLLLLGPPATIFDNYDLLLGVHGLASSNETFDGLDCPAAGRVALKY
Specificity:	ADCY6 antibody was raised against the C terminal of ADCY6
Purification:	Affinity purified

Target Details

Target:	ADCY6
Alternative Name:	ADCY6 (ADCY6 Products)
Background:	ADCY6 is adenylate cyclase 6, which is a membrane-associated enzyme and catalyzes the formation of the secondary messenger cyclic adenosine monophosphate (cAMP). The expression of ADCY6 is found in normal thyroid and brain tissues, as well as some tumors, and

Target Details

its expression is significantly higher in one hyperfunctioning thyroid tumor than in normal thyroid tissue.

Molecular Weight: 125 kDa (MW of target protein)

Pathways: [EGFR Signaling Pathway](#), [Neurotrophin Signaling Pathway](#), [Thyroid Hormone Synthesis](#), [cAMP Metabolic Process](#), [Myometrial Relaxation and Contraction](#), [G-protein mediated Events](#), [Interaction of EGFR with phospholipase C-gamma](#)

Application Details

Application Notes: WB: 1 µg/mL
Optimal conditions should be determined by the investigator.

Comment: ADCY6 Blocking Peptide, catalog no. 33R-5069, is also available for use as a blocking control in assays to test for specificity of this ADCY6 antibody

Restrictions: For Research Use only

Handling

Format: Lyophilized

Reconstitution: Lyophilized powder. Add distilled water for a 1 mg/mL concentration of ADCY6 antibody in PBS

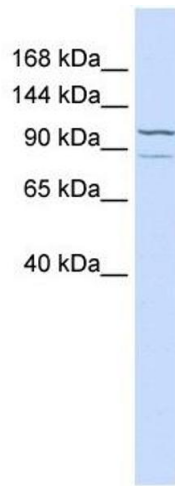
Concentration: Lot specific

Buffer: PBS

Handling Advice: Avoid repeated freeze/thaw cycles.
Dilute only prior to immediate use.

Storage: 4 °C/-20 °C

Storage Comment: Store at 2-8 °C for short periods. For longer periods of storage, store at -20 °C.



Western Blotting

Image 1. ADCY6 antibody used at 1 ug/ml to detect target protein.