

Datasheet for ABIN634530 **anti-ADCY8 antibody**



[Go to Product page](#)

1 Image

Overview

Quantity:	100 µL
Target:	ADCY8
Reactivity:	Human, Mouse, Rat
Host:	Rabbit
Clonality:	Polyclonal
Conjugate:	This ADCY8 antibody is un-conjugated
Application:	Western Blotting (WB)

Product Details

Immunogen:	ADCY8 antibody was raised using a synthetic peptide corresponding to a region with amino acids EIYVKGISEQEGKIKTYFLLGRVQPNPFILPPRRLPGQYSLAAVVLGLVQ
Purification:	Affinity purified

Target Details

Target:	ADCY8
Alternative Name:	ADCY8 (ADCY8 Products)
Background:	Adenylate cyclase is a membrane bound enzyme that catalyses the formation of cyclic AMP from ATP. The enzymatic activity is under the control of several hormones, and different polypeptides participate in the transduction of the signal from the receptor to the catalytic moiety. Stimulatory or inhibitory receptors (Rs and Ri) interact with G proteins (Gs and Gi) that exhibit GTPase activity and they modulate the activity of the catalytic subunit of the adenylyl

Target Details

cyclase.

Molecular Weight: 140 kDa (MW of target protein)

Pathways: [EGFR Signaling Pathway](#), [Neurotrophin Signaling Pathway](#), [Thyroid Hormone Synthesis](#), [cAMP Metabolic Process](#), [Myometrial Relaxation and Contraction](#), [G-protein mediated Events](#), [Interaction of EGFR with phospholipase C-gamma](#)

Application Details

Application Notes: WB: 1 µg/mL
Optimal conditions should be determined by the investigator.

Comment: ADCY8 Blocking Peptide, catalog no. 33R-2494, is also available for use as a blocking control in assays to test for specificity of this ADCY8 antibody

Restrictions: For Research Use only

Handling

Format: Lyophilized

Reconstitution: Lyophilized powder. Add distilled water for a 1 mg/mL concentration of ADCY8 antibody in PBS

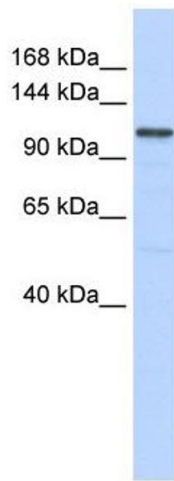
Concentration: Lot specific

Buffer: PBS

Handling Advice: Avoid repeated freeze/thaw cycles.

Storage: 4 °C/-20 °C

Storage Comment: Store at 2-8 °C for short periods. For longer periods of storage, store at -20 °C.



Western Blotting

Image 1. ADCY8 antibody used at 1 ug/ml to detect target protein.