

## Datasheet for ABIN634532 **anti-GLP2R antibody (N-Term)**



[Go to Product page](#)

### 1 Image

#### Overview

Quantity:	100 µL
Target:	GLP2R
Binding Specificity:	N-Term
Reactivity:	Human
Host:	Rabbit
Clonality:	Polyclonal
Conjugate:	This GLP2R antibody is un-conjugated
Application:	Western Blotting (WB)

#### Product Details

Immunogen:	GLP2 R antibody was raised using the N terminal of GLP2 corresponding to a region with amino acids KLGSSRAGPGRGSAGLLPGVHELPMGIPAPWGTSPHSFHRKCSLWAPGRP
Specificity:	GLP2 R antibody was raised against the N terminal of GLP2
Purification:	Affinity purified

#### Target Details

Target:	GLP2R
Alternative Name:	GLP2R ( <a href="#">GLP2R Products</a> )
Background:	The GLP2 receptor (GLP2R) is a G protein-coupled receptor superfamily member closely related to the glucagon receptor and GLP1 receptor. Glucagon-like peptide-2 (GLP2) is a 33-amino acid proglucagon-derived peptide produced by intestinal enteroendocrine cells. Like glucagon-like

## Target Details

---

peptide-1 (GLP1) and glucagon itself, it is derived from the proglucagon peptide encoded by the GCG gene. GLP2 stimulates intestinal growth and upregulates villus height in the small intestine, concomitant with increased crypt cell proliferation and decreased enterocyte apoptosis. Moreover, GLP2 prevents intestinal hypoplasia resulting from total parenteral nutrition.

Molecular Weight: 61 kDa (MW of target protein)

Pathways: [Positive Regulation of Peptide Hormone Secretion](#), [Peptide Hormone Metabolism](#), [cAMP Metabolic Process](#), [Feeding Behaviour](#)

## Application Details

---

Application Notes: WB: 1 µg/mL  
Optimal conditions should be determined by the investigator.

Comment: GLP2R Blocking Peptide, catalog no. 33R-4510, is also available for use as a blocking control in assays to test for specificity of this GLP2R antibody

Restrictions: For Research Use only

## Handling

---

Format: Lyophilized

Reconstitution: Lyophilized powder. Add distilled water for a 1 mg/mL concentration of GLP0 antibody in PBS

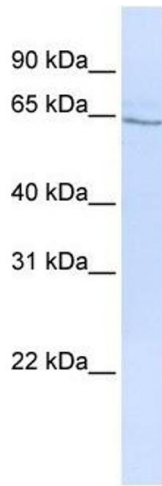
Concentration: Lot specific

Buffer: PBS

Handling Advice: Avoid repeated freeze/thaw cycles.  
Dilute only prior to immediate use.

Storage: 4 °C/-20 °C

Storage Comment: Store at 2-8 °C for short periods. For longer periods of storage, store at -20 °C.



### Western Blotting

**Image 1.** GLP2R antibody used at 1 ug/ml to detect target protein.