

Datasheet for ABIN634535
anti-KLRA1 antibody (N-Term)



[Go to Product page](#)

1 Image

Overview

Quantity:	100 µL
Target:	KLRA1
Binding Specificity:	N-Term
Reactivity:	Human
Host:	Rabbit
Clonality:	Polyclonal
Conjugate:	This KLRA1 antibody is un-conjugated
Application:	Western Blotting (WB)

Product Details

Immunogen:	KLRA1 antibody was raised using the N terminal of KLRA1 corresponding to a region with amino acids NDQGEIYSTLRFLQSPSESQNRLRPDDTQRPGKTDDKEFSVPWHLIAVTL
Specificity:	KLRA1 antibody was raised against the N terminal of KLRA1
Purification:	Affinity purified

Target Details

Target:	KLRA1
Alternative Name:	KLRA1 (KLRA1 Products)
Background:	Ly-49 Receptors or killer cell lectin-like receptor subfamily A (KLRA), member 1, are a class of natural killer cell receptor. Ly-49 proteins are a diverse set of C-type lectins that are expressed on NK cells in some mammals, including rodents but not humans. Their primary function is to

Target Details

bind host MHC class I as a mechanism of self/health recognition. Upon binding ligands, most Ly-49 receptors will deliver an inhibitory signal, preventing killing of the target cell.

Molecular Weight: 25 kDa (MW of target protein)

Application Details

Application Notes: WB: 1 µg/mL
Optimal conditions should be determined by the investigator.

Comment: KLRA1 Blocking Peptide, catalog no. 33R-6660, is also available for use as a blocking control in assays to test for specificity of this KLRA1 antibody

Restrictions: For Research Use only

Handling

Format: Lyophilized

Reconstitution: Lyophilized powder. Add distilled water for a 1 mg/mL concentration of KLRA1 antibody in PBS

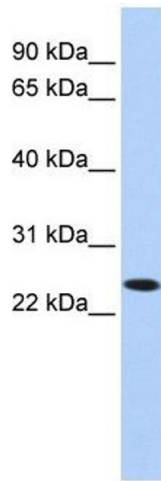
Concentration: Lot specific

Buffer: PBS

Handling Advice: Avoid repeated freeze/thaw cycles.
Dilute only prior to immediate use.

Storage: 4 °C/-20 °C

Storage Comment: Store at 2-8 °C for short periods. For longer periods of storage, store at -20 °C.



Western Blotting

Image 1. KLRA1 antibody used at 1 ug/ml to detect target protein.