

Datasheet for ABIN634547 **anti-GEM antibody (N-Term)**



[Go to Product page](#)

1 Image

Overview

Quantity:	100 µL
Target:	GEM
Binding Specificity:	N-Term
Reactivity:	Human, Mouse
Host:	Rabbit
Clonality:	Polyclonal
Conjugate:	This GEM antibody is un-conjugated
Application:	Western Blotting (WB)

Product Details

Immunogen:	GEM antibody was raised using the N terminal of GEM corresponding to a region with amino acids KEPHQYSHRNRHSATPEDHCRRSWSSDSTDSVISSESGNTYYRVVLIGE _Q
Specificity:	GEM antibody was raised against the N terminal of GEM
Purification:	Affinity purified

Target Details

Target:	GEM
Alternative Name:	GEM (GEM Products)
Background:	GEM belongs to the RAD/GEM family of GTP-binding proteins. It is associated with the inner face of the plasma membrane and could play a role as a regulatory protein in receptor-mediated signal transduction.

Target Details

Molecular Weight: 34 kDa (MW of target protein)

Application Details

Application Notes: WB: 1 µg/mL
Optimal conditions should be determined by the investigator.

Comment: GEM Blocking Peptide, catalog no. 33R-4348, is also available for use as a blocking control in assays to test for specificity of this GEM antibody

Restrictions: For Research Use only

Handling

Format: Lyophilized

Reconstitution: Lyophilized powder. Add distilled water for a 1 mg/mL concentration of GEM antibody in PBS

Concentration: Lot specific

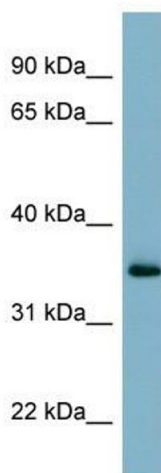
Buffer: PBS

Handling Advice: Avoid repeated freeze/thaw cycles.
Dilute only prior to immediate use.

Storage: 4 °C/-20 °C

Storage Comment: Store at 2-8 °C for short periods. For longer periods of storage, store at -20 °C.

Images



Western Blotting

Image 1. GEM antibody used at 1 ug/ml to detect target protein.