

Datasheet for ABIN634550
anti-Tetraspanin 6 antibody (N-Term)



[Go to Product page](#)

1 Image

Overview

Quantity:	100 µL
Target:	Tetraspanin 6 (TSPAN6)
Binding Specificity:	N-Term
Reactivity:	Human, Mouse, Rat
Host:	Rabbit
Clonality:	Polyclonal
Conjugate:	This Tetraspanin 6 antibody is un-conjugated
Application:	Western Blotting (WB)

Product Details

Immunogen:	Tetraspanin 6 antibody was raised using the N terminal of TSPAN6 corresponding to a region with amino acids VGIWGVKVSLENYFSLLENEKATNVPFVLIATGTVIILLGTFGCFATCRASA
Specificity:	Tetraspanin 6 antibody was raised against the N terminal of TSPAN6
Purification:	Affinity purified

Target Details

Target:	Tetraspanin 6 (TSPAN6)
Alternative Name:	Tetraspanin 6 (TSPAN6 Products)
Background:	TSPAN6 is a member of the transmembrane 4 superfamily, also known as the tetraspanin family. Most of these members are cell-surface proteins that are characterized by the presence of four hydrophobic domains. The proteins mediate signal transduction events that play a role

Target Details

in the regulation of cell development, activation, growth and motility. This protein is a cell surface glycoprotein and is highly similar in sequence to the transmembrane 4 superfamily member 2.

Molecular Weight: 27 kDa (MW of target protein)

Application Details

Application Notes: WB: 1 µg/mL
Optimal conditions should be determined by the investigator.

Comment: Tetraspanin 6 Blocking Peptide, catalog no. 33R-9562, is also available for use as a blocking control in assays to test for specificity of this Tetraspanin 6 antibody

Restrictions: For Research Use only

Handling

Format: Lyophilized

Reconstitution: Lyophilized powder. Add distilled water for a 1 mg/mL concentration of TSPAN6 antibody in PBS

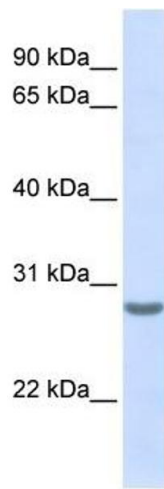
Concentration: Lot specific

Buffer: PBS

Handling Advice: Avoid repeated freeze/thaw cycles.
Dilute only prior to immediate use.

Storage: 4 °C/-20 °C

Storage Comment: Store at 2-8 °C for short periods. For longer periods of storage, store at -20 °C.



Western Blotting

Image 1. Tetraspanin 6 antibody used at 1 ug/ml to detect target protein.