

Datasheet for ABIN634556 **anti-HFE antibody (N-Term)**



[Go to Product page](#)

1 Image

Overview

Quantity:	100 µL
Target:	HFE
Binding Specificity:	N-Term
Reactivity:	Human
Host:	Rabbit
Clonality:	Polyclonal
Conjugate:	This HFE antibody is un-conjugated
Application:	Western Blotting (WB)

Product Details

Immunogen:	HFE antibody was raised using the N terminal of HFE corresponding to a region with amino acids MGASEQDLGLSLFEALGYVDDQLFVFDHESRRVEPRTPWVSSRISSQMW
Specificity:	HFE antibody was raised against the N terminal of HFE
Purification:	Affinity purified

Target Details

Target:	HFE
Alternative Name:	HFE (HFE Products)
Background:	HFE is a membrane protein that is similar to MHC class I-type proteins and associates with beta2-microglobulin (beta2M). It is thought that this protein functions to regulate iron absorption by regulating the interaction of the transferrin receptor with transferrin. The iron

Target Details

storage disorder, hereditary haemochromatosis, is a recessive genetic disorder that results from defects in its gene.

Molecular Weight: 40 kDa (MW of target protein)

Pathways: [Transition Metal Ion Homeostasis](#), [Regulation of Leukocyte Mediated Immunity](#), [Positive Regulation of Immune Effector Process](#)

Application Details

Application Notes: WB: 1 µg/mL
Optimal conditions should be determined by the investigator.

Comment: HFE Blocking Peptide, catalog no. 33R-6012, is also available for use as a blocking control in assays to test for specificity of this HFE antibody

Restrictions: For Research Use only

Handling

Format: Lyophilized

Reconstitution: Lyophilized powder. Add distilled water for a 1 mg/mL concentration of HFE antibody in PBS

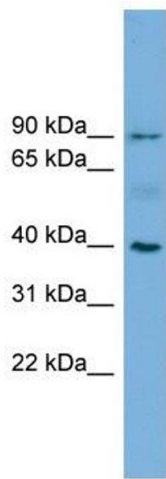
Concentration: Lot specific

Buffer: PBS

Handling Advice: Avoid repeated freeze/thaw cycles.
Dilute only prior to immediate use.

Storage: 4 °C/-20 °C

Storage Comment: Store at 2-8 °C for short periods. For longer periods of storage, store at -20 °C.



Western Blotting

Image 1. HFE antibody used at 1 ug/ml to detect target protein.