

Datasheet for ABIN634557  
**anti-HFE antibody (C-Term)**



[Go to Product page](#)

2 Images

## Overview

Quantity:	100 µL
Target:	HFE
Binding Specificity:	C-Term
Reactivity:	Human
Host:	Rabbit
Clonality:	Polyclonal
Conjugate:	This HFE antibody is un-conjugated
Application:	Western Blotting (WB), Immunohistochemistry (IHC)

## Product Details

Immunogen:	HFE antibody was raised using the C terminal of HFE corresponding to a region with amino acids FEPKDVLPNGDGTQGWITLAVPPGEEQRYTCQVEHPGLDQPLIVIWEPS
Specificity:	HFE antibody was raised against the C terminal of HFE
Purification:	Affinity purified

## Target Details

Target:	HFE
Alternative Name:	HFE ( <a href="#">HFE Products</a> )
Background:	HFE is a membrane protein that is similar to MHC class I-type proteins and associates with beta2-microglobulin (beta2M). It is thought that this protein functions to regulate iron absorption by regulating the interaction of the transferrin receptor with transferrin. The iron

## Target Details

---

storage disorder, hereditary haemochromatosis, is a recessive genetic disorder that results from defects in its gene.

Molecular Weight: 28 kDa (MW of target protein)

Pathways: [Transition Metal Ion Homeostasis](#), [Regulation of Leukocyte Mediated Immunity](#), [Positive Regulation of Immune Effector Process](#)

## Application Details

---

Application Notes: WB: 0.25 µg/mL, IHC: 4-8 µg/mL  
Optimal conditions should be determined by the investigator.

Comment: HFE Blocking Peptide, catalog no. 33R-2879, is also available for use as a blocking control in assays to test for specificity of this HFE antibody

Restrictions: For Research Use only

## Handling

---

Format: Lyophilized

Reconstitution: Lyophilized powder. Add distilled water for a 1 mg/mL concentration of HFE antibody in PBS

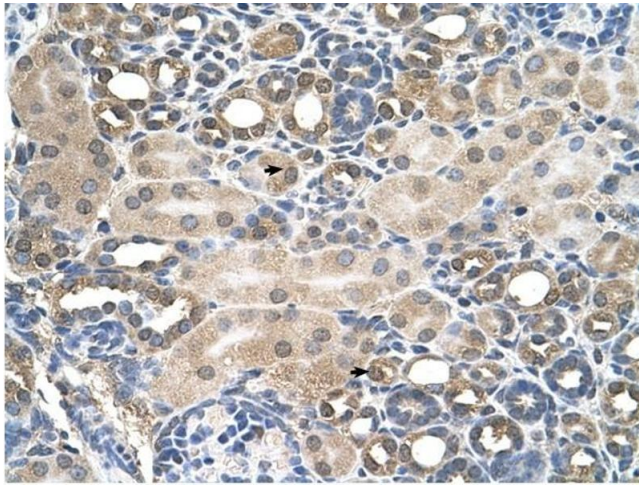
Concentration: Lot specific

Buffer: PBS

Handling Advice: Avoid repeated freeze/thaw cycles.  
Dilute only prior to immediate use.

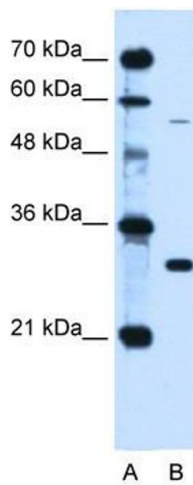
Storage: 4 °C/-20 °C

Storage Comment: Store at 2-8 °C for short periods. For longer periods of storage, store at -20 °C.



### Immunohistochemistry

**Image 1.** HFE antibody was used for immunohistochemistry at a concentration of 4-8 ug/ml to stain Epithelial cells of renal tubule (arrows) in Human Kidney. Magnification is at 400X



### Western Blotting

**Image 2.** HFE antibody used at 0.25 ug/ml to detect target protein.