

Datasheet for ABIN634566
anti-Heme Oxygenase antibody



[Go to Product page](#)

1 Image

Overview

Quantity:	100 µL
Target:	Heme Oxygenase (HMOX)
Reactivity:	Human, Mouse, Rat
Host:	Rabbit
Clonality:	Polyclonal
Conjugate:	This Heme Oxygenase antibody is un-conjugated
Application:	Western Blotting (WB)

Product Details

Immunogen:	Heme Oxygenase antibody was raised using a synthetic peptide corresponding to a region with amino acids ERPQPDSMPQDLSEALKEATKEVHTQAENAEFMRNFKGQVTRDGFKLVM
Purification:	Affinity purified

Target Details

Target:	Heme Oxygenase (HMOX)
Alternative Name:	Heme Oxygenase (HMOX Products)
Background:	HMOX1 belongs to the heme oxygenase family. Heme oxygenase, an essential enzyme in heme catabolism, cleaves heme to form biliverdin, which is subsequently converted to bilirubin by biliverdin reductase, and carbon monoxide, a putative neurotransmitter.
Molecular Weight:	33 kDa (MW of target protein)

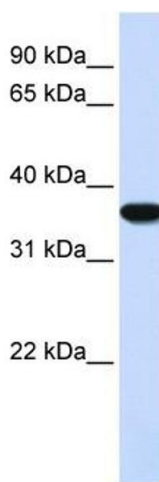
Application Details

Application Notes:	WB: 1 µg/mL Optimal conditions should be determined by the investigator.
Comment:	Heme Oxygenase Blocking Peptide, catalog no. 33R-2708, is also available for use as a blocking control in assays to test for specificity of this Heme Oxygenase antibody
Restrictions:	For Research Use only

Handling

Format:	Lyophilized
Reconstitution:	Lyophilized powder. Add distilled water for a 1 mg/mL concentration of HMOX1 antibody in PBS
Concentration:	Lot specific
Buffer:	PBS
Handling Advice:	Avoid repeated freeze/thaw cycles.
Storage:	4 °C/-20 °C
Storage Comment:	Store at 2-8 °C for short periods. For longer periods of storage, store at -20 °C.

Images



Western Blotting

Image 1. Heme Oxygenase antibody used at 1 ug/ml to detect target protein.