

Datasheet for ABIN634568 **anti-ASB5 antibody (C-Term)**



[Go to Product page](#)

1 Image

Overview

Quantity:	100 µL
Target:	ASB5
Binding Specificity:	C-Term
Reactivity:	Human, Mouse, Rat
Host:	Rabbit
Clonality:	Polyclonal
Conjugate:	This ASB5 antibody is un-conjugated
Application:	Western Blotting (WB)

Product Details

Immunogen:	ASB5 antibody was raised using the C terminal of ASB5 corresponding to a region with amino acids LLLLEFGADINAKNTELLRPIDVATSSSMVERILLQHEATPSSLYQLCRLC
Specificity:	ASB5 antibody was raised against the C terminal of ASB5
Purification:	Affinity purified

Target Details

Target:	ASB5
Alternative Name:	ASB5 (ASB5 Products)
Background:	They contain ankyrin repeat sequence and SOCS box domain. The SOCSbox serves to couple suppressor of cytokine signalling (SOCS)proteins and their binding partners with the elongin B and Ccomplex, possibly targeting them for degradation.

Target Details

Molecular Weight: 36 kDa (MW of target protein)

Application Details

Application Notes: WB: 1 µg/mL
Optimal conditions should be determined by the investigator.

Comment: ASB5 Blocking Peptide, catalog no. 33R-5157, is also available for use as a blocking control in assays to test for specificity of this ASB5 antibody

Restrictions: For Research Use only

Handling

Format: Lyophilized

Reconstitution: Lyophilized powder. Add distilled water for a 1 mg/mL concentration of ASB5 antibody in PBS

Concentration: Lot specific

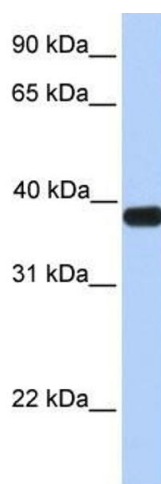
Buffer: PBS

Handling Advice: Avoid repeated freeze/thaw cycles.
Dilute only prior to immediate use.

Storage: 4 °C/-20 °C

Storage Comment: Store at 2-8 °C for short periods. For longer periods of storage, store at -20 °C.

Images



Western Blotting

Image 1. ASB5 antibody used at 1 ug/ml to detect target protein.