

Datasheet for ABIN634572  
**anti-ATP6V0A2 antibody (N-Term)**



[Go to Product page](#)

2 Images

## Overview

Quantity:	100 µL
Target:	ATP6V0A2
Binding Specificity:	N-Term
Reactivity:	Human, Mouse, Rat
Host:	Rabbit
Clonality:	Polyclonal
Conjugate:	This ATP6V0A2 antibody is un-conjugated
Application:	Western Blotting (WB)

## Product Details

Immunogen:	ATP6 V6 2 antibody was raised using the N terminal of ATP6 6 2 corresponding to a region with amino acids INRADIPLEGEASPPAPPLKQVLEMQEQLQKLEVELREVTKNKEKLRKN
Specificity:	ATP6 V6 2 antibody was raised against the N terminal of ATP6 6 2
Purification:	Affinity purified

## Target Details

Target:	ATP6V0A2
Alternative Name:	ATP6V0A2 ( <a href="#">ATP6V0A2 Products</a> )
Background:	The multisubunit vacuolar-type proton pump (H(+)-ATPase or V-ATPase) is essential for acidification of diverse cellular components, including endosomes, lysosomes, clathrin-coated vesicles, secretory vesicles, and chromaffin granules, and it is found at high density in the

## Target Details

---

plasma membrane of certain specialized cells.

Molecular Weight: 98 kDa (MW of target protein)

Pathways: [Transition Metal Ion Homeostasis](#), [Proton Transport](#)

## Application Details

---

Application Notes: WB: 1 µg/mL

Optimal conditions should be determined by the investigator.

Comment: ATP6V0A2 Blocking Peptide, catalog no. 33R-4080, is also available for use as a blocking control in assays to test for specificity of this ATP6V0A2 antibody

Restrictions: For Research Use only

## Handling

---

Format: Lyophilized

Reconstitution: Lyophilized powder. Add distilled water for a 1 mg/mL concentration of ATP0 0 2 antibody in PBS

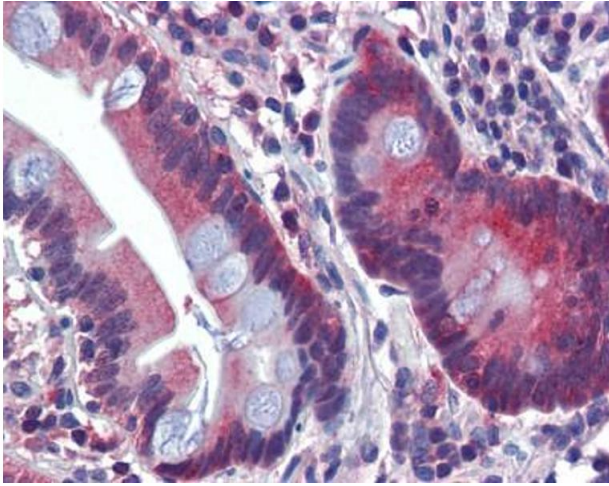
Concentration: Lot specific

Buffer: PBS

Handling Advice: Avoid repeated freeze/thaw cycles.  
Dilute only prior to immediate use.

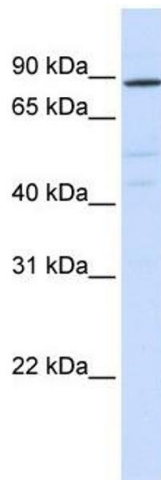
Storage: 4 °C/-20 °C

Storage Comment: Store at 2-8 °C for short periods. For longer periods of storage, store at -20 °C.



### Immunohistochemistry

**Image 1.** ATP6V0A2 antibody was used for immunohistochemistry at a concentration of 4-8 ug/ml. Magnification is at 400X



### Western Blotting

**Image 2.** ATP6V0A2 antibody used at 1 ug/ml to detect target protein.