

Datasheet for ABIN634576
anti-CALCRL antibody (N-Term)



[Go to Product page](#)

1 Image

Overview

Quantity:	100 µL
Target:	CALCRL
Binding Specificity:	N-Term
Reactivity:	Human, Mouse, Rat
Host:	Rabbit
Clonality:	Polyclonal
Conjugate:	This CALCRL antibody is un-conjugated
Application:	Western Blotting (WB)

Product Details

Immunogen:	CALCRL antibody was raised using the N terminal of CALCRL corresponding to a region with amino acids DGNWFRHPASNRTWTNYTQCNVNTHEKVKTALNLFYLTIIHGHSIASLL
Specificity:	CALCRL antibody was raised against the N terminal of CALCRL
Purification:	Affinity purified

Target Details

Target:	CALCRL
Alternative Name:	CALCRL (CALCRL Products)
Background:	CALCRL is the receptor for calcitonin-gene-related peptide (CGRP) together with RAMP1 and receptor for adrenomedullin together with RAMP2 or RAMP3. The activity of this receptor is mediated by G proteins which activate adenylyl cyclase.

Target Details

Molecular Weight: 53 kDa (MW of target protein)

Pathways: [cAMP Metabolic Process](#)

Application Details

Application Notes: WB: 1 µg/mL
Optimal conditions should be determined by the investigator.

Comment: CALCRL Blocking Peptide, catalog no. 33R-1962, is also available for use as a blocking control in assays to test for specificity of this CALCRL antibody

Restrictions: For Research Use only

Handling

Format: Lyophilized

Reconstitution: Lyophilized powder. Add distilled water for a 1 mg/mL concentration of CALCRL antibody in PBS

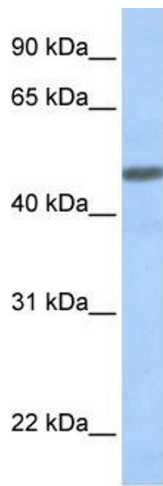
Concentration: Lot specific

Buffer: PBS

Handling Advice: Avoid repeated freeze/thaw cycles.
Dilute only prior to immediate use.

Storage: 4 °C/-20 °C

Storage Comment: Store at 2-8 °C for short periods. For longer periods of storage, store at -20 °C.



Western Blotting

Image 1. CALCRL antibody used at 1 ug/ml to detect target protein.