

Datasheet for ABIN634579
anti-GHRHR antibody (N-Term)



[Go to Product page](#)

1 Image

Overview

Quantity:	100 µL
Target:	GHRHR
Binding Specificity:	N-Term
Reactivity:	Human
Host:	Rabbit
Clonality:	Polyclonal
Conjugate:	This GHRHR antibody is un-conjugated
Application:	Western Blotting (WB)

Product Details

Immunogen:	GHRHR antibody was raised using the N terminal of GHRHR corresponding to a region with amino acids VTLPCPDFFSHFSSGAVKRDCTITGWSEFPFPYPVACPVPLELLAEEE
Specificity:	GHRHR antibody was raised against the N terminal of GHRHR
Purification:	Affinity purified

Target Details

Target:	GHRHR
Alternative Name:	GHRHR (GHRHR Products)
Background:	GHRHR is a receptor for growth hormone-releasing hormone. Binding of this hormone to the receptor leads to synthesis and release of growth hormone. Mutations in its gene have been associated with isolated growth hormone deficiency (IGHD), also known as Dwarfism of Sindh,

Target Details

a disorder characterized by short stature.

Molecular Weight: 47 kDa (MW of target protein)

Pathways: [Intracellular Steroid Hormone Receptor Signaling Pathway](#), [Hormone Transport](#), [Regulation of Intracellular Steroid Hormone Receptor Signaling](#), [cAMP Metabolic Process](#)

Application Details

Application Notes: WB: 1 µg/mL
Optimal conditions should be determined by the investigator.

Comment: GHRHR Blocking Peptide, catalog no. 33R-9852, is also available for use as a blocking control in assays to test for specificity of this GHRHR antibody

Restrictions: For Research Use only

Handling

Format: Lyophilized

Reconstitution: Lyophilized powder. Add distilled water for a 1 mg/mL concentration of GHRHR antibody in PBS

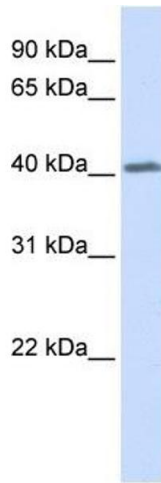
Concentration: Lot specific

Buffer: PBS

Handling Advice: Avoid repeated freeze/thaw cycles.
Dilute only prior to immediate use.

Storage: 4 °C/-20 °C

Storage Comment: Store at 2-8 °C for short periods. For longer periods of storage, store at -20 °C.



Western Blotting

Image 1. GHRHR antibody used at 1 ug/ml to detect target protein.