

Datasheet for ABIN634602
anti-Symplekin antibody (N-Term)



[Go to Product page](#)

1 Image

Overview

Quantity:	100 µL
Target:	Symplekin (SYMPK)
Binding Specificity:	N-Term
Reactivity:	Human
Host:	Rabbit
Clonality:	Polyclonal
Conjugate:	This Symplekin antibody is un-conjugated
Application:	Western Blotting (WB)

Product Details

Immunogen:	Symplekin antibody was raised using the N terminal of SYMPK corresponding to a region with amino acids RTHAIKFVEGLIVTLSPRMADSEIPRRQEHDISLDRIPRDHPYIQYNVLW
Specificity:	Symplekin antibody was raised against the N terminal of SYMPK
Purification:	Affinity purified

Target Details

Target:	Symplekin (SYMPK)
Alternative Name:	Symplekin (SYMPK Products)
Background:	SYMPK is a nuclear protein that functions in the regulation of polyadenylation and promotes gene expression. The protein forms a high-molecular weight complex with components of the polyadenylation machinery. It is thought to serve as a scaffold for recruiting regulatory factors

Target Details

to the polyadenylation complex.

Molecular Weight: 141 kDa (MW of target protein)

Application Details

Application Notes: WB: 1 µg/mL

Optimal conditions should be determined by the investigator.

Comment: Symplekin Blocking Peptide, catalog no. 33R-8224, is also available for use as a blocking control in assays to test for specificity of this Symplekin antibody

Restrictions: For Research Use only

Handling

Format: Lyophilized

Reconstitution: Lyophilized powder. Add distilled water for a 1 mg/mL concentration of SYMPK antibody in PBS

Concentration: Lot specific

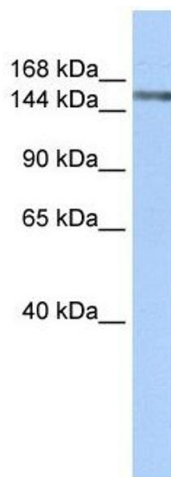
Buffer: PBS

Handling Advice: Avoid repeated freeze/thaw cycles.
Dilute only prior to immediate use.

Storage: 4 °C/-20 °C

Storage Comment: Store at 2-8 °C for short periods. For longer periods of storage, store at -20 °C.

Images



Western Blotting

Image 1. Symplekin antibody used at 1 ug/ml to detect target protein.