

Datasheet for ABIN634607  
**anti-Claudin 1 antibody (C-Term)**



[Go to Product page](#)

2 Images

## Overview

Quantity:	100 µL
Target:	Claudin 1 (CLDN1)
Binding Specificity:	C-Term
Reactivity:	Human, Dog
Host:	Rabbit
Clonality:	Polyclonal
Conjugate:	This Claudin 1 antibody is un-conjugated
Application:	Western Blotting (WB), Immunohistochemistry (IHC)

## Product Details

Immunogen:	Claudin 1 antibody was raised using the C terminal of CLDN1 corresponding to a region with amino acids GQALFTGWAAASLCLLGALLCCSCPRKTTSYTPRYPKPPAPSSGKDYV
Specificity:	Claudin 1 antibody was raised against the C terminal of CLDN1
Purification:	Affinity purified

## Target Details

Target:	Claudin 1 (CLDN1)
Alternative Name:	Claudin 1 ( <a href="#">CLDN1 Products</a> )
Background:	Tight junctions represent one mode of cell-to-cell adhesion in epithelial or endothelial cell sheets, forming continuous seals around cells and serving as a physical barrier to prevent solutes and water from passing freely through the paracellular space. These junctions are

## Target Details

---

comprised of sets of continuous networking strands in the outwardly facing cytoplasmic leaflet, with complementary grooves in the inwardly facing extracytoplasmic leaflet. This protein, a member of the claudin family, is an integral membrane protein and a component of tight junction strands.

Molecular Weight: 23 kDa (MW of target protein)

Pathways: [Cell-Cell Junction Organization](#), [Hepatitis C](#)

## Application Details

---

Application Notes: WB: 1-5 µg/mL, IHC: 4-8 µg/mL  
Optimal conditions should be determined by the investigator.

Comment: Claudin 1 Blocking Peptide, catalog no. 33R-3488, is also available for use as a blocking control in assays to test for specificity of this Claudin 1 antibody

Restrictions: For Research Use only

## Handling

---

Format: Lyophilized

Reconstitution: Lyophilized powder. Add distilled water for a 1 mg/mL concentration of CLDN1 antibody in PBS

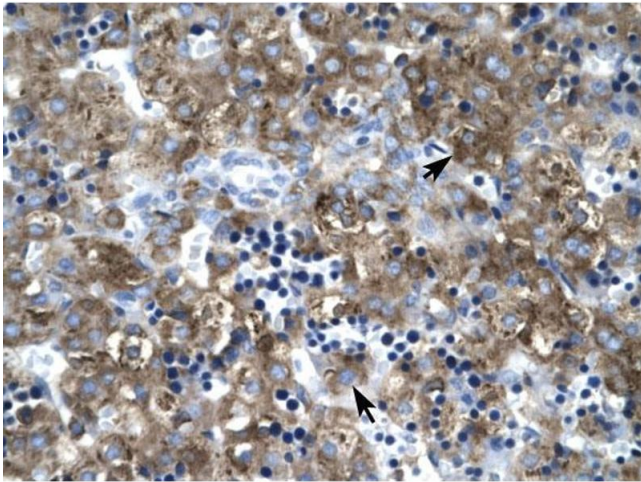
Concentration: Lot specific

Buffer: PBS

Handling Advice: Avoid repeated freeze/thaw cycles.  
Dilute only prior to immediate use.

Storage: 4 °C/-20 °C

Storage Comment: Store at 2-8 °C for short periods. For longer periods of storage, store at -20 °C.



### Immunohistochemistry

**Image 1.** Claudin 1 antibody was used for immunohistochemistry at a concentration of 4-8 ug/ml to stain Hepatocytes (arrows) in Human Liver. Magnification is at 400X



### Western Blotting

**Image 2.** Claudin 1 antibody used at 1-5 ug/ml to detect target protein.