

Datasheet for ABIN634609  
**anti-NPHP1 antibody**



[Go to Product page](#)

1 Image

## Overview

|              |                                      |
|--------------|--------------------------------------|
| Quantity:    | 100 µL                               |
| Target:      | NPHP1                                |
| Reactivity:  | Human, Mouse, Rat, Dog               |
| Host:        | Rabbit                               |
| Clonality:   | Polyclonal                           |
| Conjugate:   | This NPHP1 antibody is un-conjugated |
| Application: | Western Blotting (WB)                |

## Product Details

|               |  |
|---------------|--|
| Immunogen:    | NPHP1 antibody was raised using a synthetic peptide corresponding to a region with amino acids GILFELGISYIRNSTGERGELSCGWVFLKLFDA SGVPIPAKTYELFLNGG |
| Purification: | Affinity purified  |

## Target Details

|                   |  |
|-------------------|--|
| Target:           | NPHP1  |
| Alternative Name: | NPHP1 ( <a href="#">NPHP1 Products</a> )   |
| Background:       | Together with Cas NPHP1 may play a role in the control of epithelial cell polarity. NPHP1 seems to help to recruit protein tyrosine kinase 2 beta (PTK2B) to cell matrix adhesions, thereby initiating phosphorylation of PTK2B and PTK2B-dependent signaling. |
| Molecular Weight: | 83 kDa (MW of target protein)  |

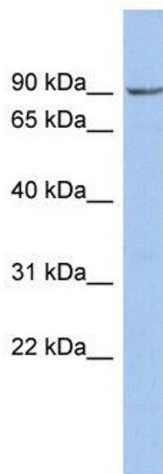
## Application Details

|                    |  |
|--------------------|--|
| Application Notes: | WB: 1 µg/mL<br>Optimal conditions should be determined by the investigator.  |
| Comment:           | NPHP1 Blocking Peptide, catalog no. 33R-3334, is also available for use as a blocking control in assays to test for specificity of this NPHP1 antibody |
| Restrictions:      | For Research Use only  |

## Handling

|                  |  |
|------------------|--|
| Format:          | Lyophilized  |
| Reconstitution:  | Lyophilized powder. Add distilled water for a 1 mg/mL concentration of NPHP1 antibody in PBS |
| Concentration:   | Lot specific   |
| Buffer:          | PBS  |
| Handling Advice: | Avoid repeated freeze/thaw cycles.   |
| Storage:         | 4 °C/-20 °C  |
| Storage Comment: | Store at 2-8 °C for short periods. For longer periods of storage, store at -20 °C.           |

## Images



### Western Blotting

**Image 1.** NPHP1 antibody used at 1 µg/ml to detect target protein.