

Datasheet for ABIN634610
anti-Annexin a10 antibody (Middle Region)



[Go to Product page](#)

1 Image

Overview

Quantity:	100 µL
Target:	Annexin a10 (ANXA10)
Binding Specificity:	Middle Region
Reactivity:	Chemical
Host:	Rabbit
Clonality:	Polyclonal
Conjugate:	This Annexin a10 antibody is un-conjugated
Application:	Western Blotting (WB)

Product Details

Immunogen:	Annexin A10 antibody was raised using the middle region of ANXA10 corresponding to a region with amino acids VLWEACQQKTGEHKTMLQMILCNKSYQQLRLVFQEFQNISGQDMVDAINE
Specificity:	Annexin A10 antibody was raised against the middle region of ANXA10
Cross-Reactivity:	Human
Purification:	Affinity purified

Target Details

Target:	Annexin a10 (ANXA10)
Alternative Name:	Annexin A10 (ANXA10 Products)
Target Type:	Chemical

Target Details

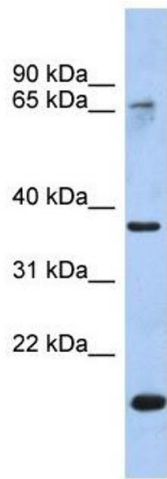
Background:	This gene encodes a member of the annexin family. Members of this calcium-dependent phospholipid-binding protein family play a role in the regulation of cellular growth and in signal transduction pathways. The function of this gene has not yet been dete
Molecular Weight:	37 kDa (MW of target protein)

Application Details

Application Notes:	WB: 1 µg/mL Optimal conditions should be determined by the investigator.
Comment:	Annexin A10 Blocking Peptide, catalog no. 33R-9693, is also available for use as a blocking control in assays to test for specificity of this Annexin A10 antibody
Restrictions:	For Research Use only

Handling

Format:	Lyophilized
Reconstitution:	Lyophilized powder. Add distilled water for a 1 mg/mL concentration of ANXA10 antibody in PBS
Concentration:	Lot specific
Buffer:	PBS
Handling Advice:	Avoid repeated freeze/thaw cycles. Dilute only prior to immediate use.
Storage:	4 °C/-20 °C
Storage Comment:	Store at 2-8 °C for short periods. For longer periods of storage, store at -20 °C.



Western Blotting

Image 1. Annexin A10 antibody used at 1 ug/ml to detect target protein.