

Datasheet for ABIN634611

anti-Ig antibody[Go to Product page](#)**1** Image

Overview

Quantity:	100 µL
Target:	Ig
Reactivity:	Human
Host:	Rabbit
Clonality:	Polyclonal
Conjugate:	This Ig antibody is un-conjugated
Application:	Western Blotting (WB)

Product Details

Immunogen:	ARHGDIG antibody was raised using a synthetic peptide corresponding to a region with amino acids DEAVPEYRAPGRKSLLEIRQLDPDDRSLAKYKRVLLGPLPPAVDPSLPN
Purification:	Affinity purified

Target Details

Target:	Ig
Abstract:	Ig Products
Background:	ARHGDIG is highly expressed in the entire brain, with regional variations. The mRNA is also present at high levels in kidney and pancreas and at moderate levels in spinal cord, stomach, and pituitary gland. ARHGDIG is mapped to chromosome band 16p13.3 which is rich in deletion mutants of genes involved in several human diseases, notably polycystic kidney disease, alpha-thalassemia, tuberous sclerosis, mental retardation, and cancer.

Target Details

Molecular Weight: 25 kDa (MW of target protein)

Application Details

Application Notes: WB: 1 µg/mL
Optimal conditions should be determined by the investigator.

Comment: ARHGDIG Blocking Peptide, catalog no. 33R-1892, is also available for use as a blocking control in assays to test for specificity of this ARHGDIG antibody

Restrictions: For Research Use only

Handling

Format: Lyophilized

Reconstitution: Lyophilized powder. Add distilled water for a 1 mg/mL concentration of ARHGDIG antibody in PBS

Concentration: Lot specific

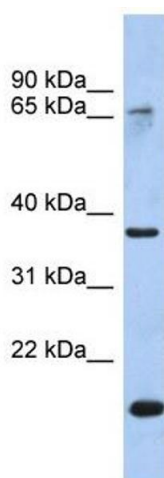
Buffer: PBS

Handling Advice: Avoid repeated freeze/thaw cycles.

Storage: 4 °C/-20 °C

Storage Comment: Store at 2-8 °C for short periods. For longer periods of storage, store at -20 °C.

Images



Western Blotting

Image 1. ARHGDIG antibody used at 1 ug/ml to detect target protein.