

Datasheet for ABIN634617
anti-ANXA8L2 antibody (Middle Region)



[Go to Product page](#)

1 Image

Overview

Quantity:	100 µL
Target:	ANXA8L2
Binding Specificity:	Middle Region
Reactivity:	Chemical
Host:	Rabbit
Clonality:	Polyclonal
Conjugate:	This ANXA8L2 antibody is un-conjugated
Application:	Western Blotting (WB)

Product Details

Immunogen:	Annexin A8-Like 2 antibody was raised using the middle region of ANXA8 L2 corresponding to a region with amino acids VFEEYEKIANKSIEDSIKSETHGSLEEAMLTVVKCTQNLHSYFAERLYYA
Specificity:	Annexin A8-Like 2 antibody was raised against the middle region of ANXA8 L2
Cross-Reactivity:	Human, Rat (Rattus)
Purification:	Affinity purified

Target Details

Target:	ANXA8L2
Alternative Name:	Annexin A8-Like 2 (ANXA8L2 Products)
Target Type:	Chemical

Target Details

Background: ANXA8L2 is a member of the annexin family of evolutionarily conserved Ca²⁺ and phospholipid binding proteins. The protein may function as an anticoagulant that indirectly inhibits the thromboplastin-specific complex. Overexpression of this gene has been associated with acute myelocytic leukemia. A highly similar duplicated copy of this gene is found in close proximity on the long arm of chromosome 10.

Molecular Weight: 37 kDa (MW of target protein)

Application Details

Application Notes: WB: 1 µg/mL
Optimal conditions should be determined by the investigator.

Comment: Annexin A8-Like 2 Blocking Peptide, catalog no. 33R-9523, is also available for use as a blocking control in assays to test for specificity of this Annexin A8-Like 2 antibody

Restrictions: For Research Use only

Handling

Format: Lyophilized

Reconstitution: Lyophilized powder. Add distilled water for a 1 mg/mL concentration of ANXA0 2 antibody in PBS

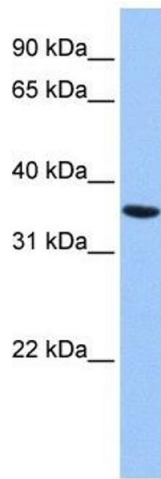
Concentration: Lot specific

Buffer: PBS

Handling Advice: Avoid repeated freeze/thaw cycles.
Dilute only prior to immediate use.

Storage: 4 °C/-20 °C

Storage Comment: Store at 2-8 °C for short periods. For longer periods of storage, store at -20 °C.



Western Blotting

Image 1. Annexin A8-Like 2 antibody used at 1 ug/ml to detect target protein.