

Datasheet for ABIN634626
anti-Parvin, beta antibody (C-Term)



[Go to Product page](#)

1 Image

Overview

Quantity:	100 µL
Target:	Parvin, beta (PARVB)
Binding Specificity:	C-Term
Reactivity:	Human, Mouse, Rat
Host:	Rabbit
Clonality:	Polyclonal
Conjugate:	This Parvin, beta antibody is un-conjugated
Application:	Western Blotting (WB)

Product Details

Immunogen:	PARVB antibody was raised using the C terminal of PARVB corresponding to a region with amino acids HNVSFANELMLDGGGLKKPKARPEDVVNLDLKSTLRVLYNLFTKYKNVE
Specificity:	PARVB antibody was raised against the C terminal of PARVB
Purification:	Affinity purified

Target Details

Target:	Parvin, beta (PARVB)
Alternative Name:	PARVB (PARVB Products)
Background:	Members of the parvin family, including PARVB, are actin-binding proteins associated with focal contacts. Members of the parvin family, including PARVB, are actin-binding proteins associated with focal contacts.

Target Details

Molecular Weight: 45 kDa (MW of target protein)

Application Details

Application Notes: WB: 1 µg/mL
Optimal conditions should be determined by the investigator.

Comment: PARVB Blocking Peptide, catalog no. 33R-3803, is also available for use as a blocking control in assays to test for specificity of this PARVB antibody

Restrictions: For Research Use only

Handling

Format: Lyophilized

Reconstitution: Lyophilized powder. Add distilled water for a 1 mg/mL concentration of PARVB antibody in PBS

Concentration: Lot specific

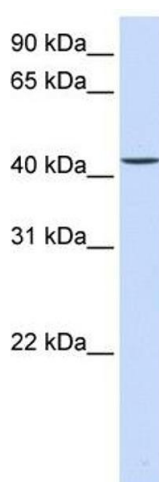
Buffer: PBS

Handling Advice: Avoid repeated freeze/thaw cycles.
Dilute only prior to immediate use.

Storage: 4 °C/-20 °C

Storage Comment: Store at 2-8 °C for short periods. For longer periods of storage, store at -20 °C.

Images



Western Blotting

Image 1. PARVB antibody used at 1 ug/ml to detect target protein.