

Datasheet for ABIN634628
anti-MYBPC2 antibody (N-Term)



[Go to Product page](#)

1 Image

Overview

Quantity:	100 µL
Target:	MYBPC2
Binding Specificity:	N-Term
Reactivity:	Human, Mouse
Host:	Rabbit
Clonality:	Polyclonal
Conjugate:	This MYBPC2 antibody is un-conjugated
Application:	Western Blotting (WB)

Product Details

Immunogen:	MYBPC2 antibody was raised using the N terminal of MYBPC2 corresponding to a region with amino acids KEAPPEDQSPTAEEPTGVFLKKPDSVSVETGKDAVVVAKVNGKELPKPT
Specificity:	MYBPC2 antibody was raised against the N terminal of MYBPC2
Purification:	Affinity purified

Target Details

Target:	MYBPC2
Alternative Name:	MYBPC2 (MYBPC2 Products)
Background:	MYBPC2 encodes a member of the myosin-binding protein family C family. Myosin-binding protein C is a myosin-associated protein found in the cross-bridge-bearing zone (C region) of A bands in striated muscle. Mutations in this gene have been associated with hypertrophic

Target Details

cardiomyopathy.

Molecular Weight: 128 kDa (MW of target protein)

Application Details

Application Notes: WB: 1 µg/mL
Optimal conditions should be determined by the investigator.

Comment: MYBPC2 Blocking Peptide, catalog no. 33R-4316, is also available for use as a blocking control in assays to test for specificity of this MYBPC2 antibody

Restrictions: For Research Use only

Handling

Format: Lyophilized

Reconstitution: Lyophilized powder. Add distilled water for a 1 mg/mL concentration of MYBPC2 antibody in PBS

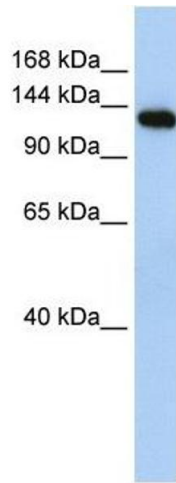
Concentration: Lot specific

Buffer: PBS

Handling Advice: Avoid repeated freeze/thaw cycles.
Dilute only prior to immediate use.

Storage: 4 °C/-20 °C

Storage Comment: Store at 2-8 °C for short periods. For longer periods of storage, store at -20 °C.



Western Blotting

Image 1. MYBPC2 antibody used at 1 ug/ml to detect target protein.