

Datasheet for ABIN634640
anti-SIGLEC6 antibody (N-Term)



[Go to Product page](#)

1 Image

Overview

Quantity:	100 µL
Target:	SIGLEC6
Binding Specificity:	N-Term
Reactivity:	Human
Host:	Rabbit
Clonality:	Polyclonal
Conjugate:	This SIGLEC6 antibody is un-conjugated
Application:	Western Blotting (WB)

Product Details

Immunogen:	SIGLEC6 antibody was raised using the N terminal of SIGLEC6 corresponding to a region with amino acids MQGAQEASASEMLPLLLPLLWAGALAQERRFQLEGPESLTVQEGLCVLVP
Specificity:	SIGLEC6 antibody was raised against the N terminal of SIGLEC6
Purification:	Affinity purified

Target Details

Target:	SIGLEC6
Alternative Name:	SIGLEC6 (SIGLEC6 Products)
Background:	SIGLEC6 is a Putative adhesion molecule that mediates sialic-acid dependent binding to cells. It binds to alpha-2,6-linked sialic acid. The sialic acid recognition site may be masked by cis interactions with sialic acids on the same cell surface.

Target Details

Molecular Weight: 36 kDa (MW of target protein)

Application Details

Application Notes: WB: 1 µg/mL
Optimal conditions should be determined by the investigator.

Comment: SIGLEC6 Blocking Peptide, catalog no. 33R-6326, is also available for use as a blocking control in assays to test for specificity of this SIGLEC6 antibody

Restrictions: For Research Use only

Handling

Format: Lyophilized

Reconstitution: Lyophilized powder. Add distilled water for a 1 mg/mL concentration of SIGLEC6 antibody in PBS

Concentration: Lot specific

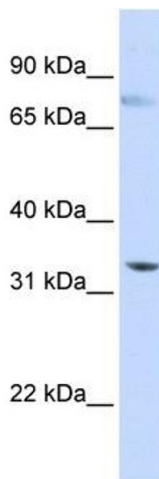
Buffer: PBS

Handling Advice: Avoid repeated freeze/thaw cycles.
Dilute only prior to immediate use.

Storage: 4 °C/-20 °C

Storage Comment: Store at 2-8 °C for short periods. For longer periods of storage, store at -20 °C.

Images



Western Blotting

Image 1. SIGLEC6 antibody used at 1 µg/ml to detect target protein.