

Datasheet for ABIN634649  
**anti-NEDD9 antibody (Middle Region)**



[Go to Product page](#)

1 Image

## Overview

Quantity:	100 µL
Target:	NEDD9
Binding Specificity:	Middle Region
Reactivity:	Human, Rat, Mouse
Host:	Rabbit
Clonality:	Polyclonal
Conjugate:	This NEDD9 antibody is un-conjugated
Application:	Western Blotting (WB)

## Product Details

Immunogen:	NEDD9 antibody was raised using the middle region of NEDD9 corresponding to a region with amino acids DLVDGINRLSFSSTGSTRSNMSTSSTSSKESLSASPAQDKRFLDPDTA
Specificity:	NEDD9 antibody was raised against the middle region of NEDD9
Purification:	Affinity purified

## Target Details

Target:	NEDD9
Alternative Name:	NEDD9 ( <a href="#">NEDD9 Products</a> )
Background:	Variation in NEDD9 is associated with susceptibility to late-onset Alzheimer and Parkinson diseases. Changes in expression of the scaffold protein HEF1/CAS-L/NEDD9 were found to be a potent prometastatic stimulus in melanoma and other cancers.

## Target Details

---

Molecular Weight: 93 kDa (MW of target protein)

## Application Details

---

Application Notes: WB: 1 µg/mL  
Optimal conditions should be determined by the investigator.

Comment: NEDD9 Blocking Peptide, catalog no. 33R-2070, is also available for use as a blocking control in assays to test for specificity of this NEDD9 antibody

Restrictions: For Research Use only

## Handling

---

Format: Lyophilized

Reconstitution: Lyophilized powder. Add distilled water for a 1 mg/mL concentration of NEDD9 antibody in PBS

Concentration: Lot specific

Buffer: PBS

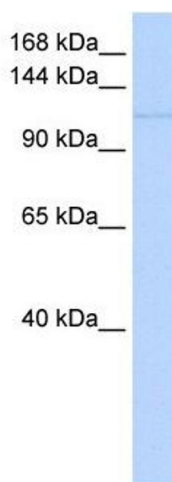
Handling Advice: Avoid repeated freeze/thaw cycles.  
Dilute only prior to immediate use.

Storage: 4 °C/-20 °C

Storage Comment: Store at 2-8 °C for short periods. For longer periods of storage, store at -20 °C.

## Images

---



### Western Blotting

**Image 1.** NEDD9 antibody used at 1 ug/ml to detect target protein.