

Datasheet for ABIN634656
anti-SPON2 antibody (N-Term)



[Go to Product page](#)

1 Image

Overview

Quantity:	100 µL
Target:	SPON2
Binding Specificity:	N-Term
Reactivity:	Human, Mouse, Rat
Host:	Rabbit
Clonality:	Polyclonal
Conjugate:	This SPON2 antibody is un-conjugated
Application:	Western Blotting (WB)

Product Details

Immunogen:	SPON2 antibody was raised using the N terminal of SPON2 corresponding to a region with amino acids CSARAPAKYSITFTGKWSQTAFPKQYPLFRPPAQWSSLLGAAHSSDYSMW
Specificity:	SPON2 antibody was raised against the N terminal of SPON2
Purification:	Affinity purified

Target Details

Target:	SPON2
Alternative Name:	SPON2 (SPON2 Products)
Background:	SPON2 is a cell adhesion protein that promote adhesion and outgrowth of hippocampal embryonic neurons. Binds directly to bacteria and their components and functions as an opsonin for macrophage phagocytosis of bacteria. It is essential in the initiation of the innate

Target Details

immune response and represents a unique pattern-recognition molecule in the ECM for microbial pathogens.

Molecular Weight: 36 kDa (MW of target protein)

Application Details

Application Notes: WB: 1 µg/mL
Optimal conditions should be determined by the investigator.

Comment: SPON2 Blocking Peptide, catalog no. 33R-1803, is also available for use as a blocking control in assays to test for specificity of this SPON2 antibody

Restrictions: For Research Use only

Handling

Format: Lyophilized

Reconstitution: Lyophilized powder. Add distilled water for a 1 mg/mL concentration of SPON2 antibody in PBS

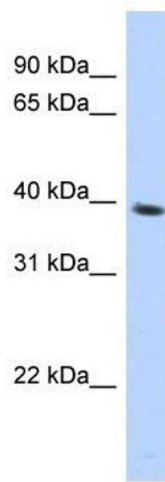
Concentration: Lot specific

Buffer: PBS

Handling Advice: Avoid repeated freeze/thaw cycles.
Dilute only prior to immediate use.

Storage: 4 °C/-20 °C

Storage Comment: Store at 2-8 °C for short periods. For longer periods of storage, store at -20 °C.



Western Blotting

Image 1. SPON2 antibody used at 1 ug/ml to detect target protein.