

Datasheet for ABIN634669
anti-KIT Ligand antibody (Middle Region)



[Go to Product page](#)

3 Images

Overview

Quantity:	100 µL
Target:	KIT Ligand (KITLG)
Binding Specificity:	Middle Region
Reactivity:	Human, Mouse, Rat, Dog
Host:	Rabbit
Clonality:	Polyclonal
Conjugate:	This KIT Ligand antibody is un-conjugated
Application:	Western Blotting (WB)

Product Details

Immunogen:	KITLG antibody was raised using the middle region of KITLG corresponding to a region with amino acids TKPFMLPPVAASSLRNDSSSSNRKAKNPPGDSSLHWAAMALPALFSLIIG
Specificity:	KITLG antibody was raised against the middle region of KITLG
Purification:	Affinity purified

Target Details

Target:	KIT Ligand (KITLG)
Alternative Name:	KITLG (KITLG Products)
Background:	KITLG is the ligand of the tyrosine-kinase receptor encoded by the KIT locus. This ligand is a pleiotropic factor that acts in utero in germ cell and neural cell development, and hematopoiesis, all believed to reflect a role in cell migration. In adults, it functions

Target Details

pleiotropically, while mostly noted for its continued requirement in hematopoiesis.

Molecular Weight: 28 kDa (MW of target protein)

Pathways: [RTK Signaling](#), [Fc-epsilon Receptor Signaling Pathway](#), [EGFR Signaling Pathway](#), [Neurotrophin Signaling Pathway](#)

Application Details

Application Notes: WB: 1 µg/mL
Optimal conditions should be determined by the investigator.

Comment: KITLG Blocking Peptide, catalog no. 33R-9145, is also available for use as a blocking control in assays to test for specificity of this KITLG antibody

Restrictions: For Research Use only

Handling

Format: Lyophilized

Reconstitution: Lyophilized powder. Add distilled water for a 1 mg/mL concentration of KITLG antibody in PBS

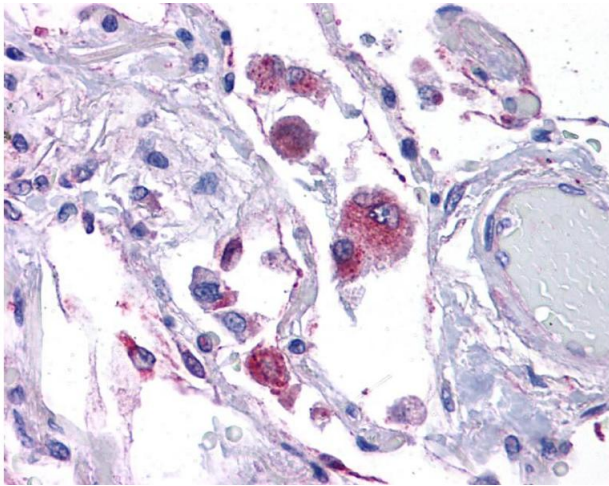
Concentration: Lot specific

Buffer: PBS

Handling Advice: Avoid repeated freeze/thaw cycles.
Dilute only prior to immediate use.

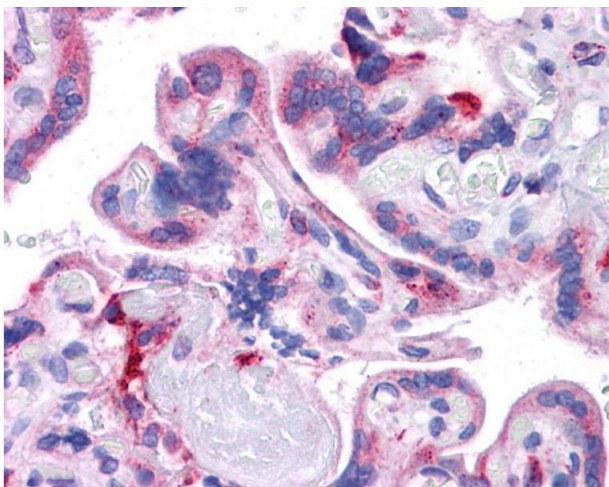
Storage: 4 °C/-20 °C

Storage Comment: Store at 2-8 °C for short periods. For longer periods of storage, store at -20 °C.



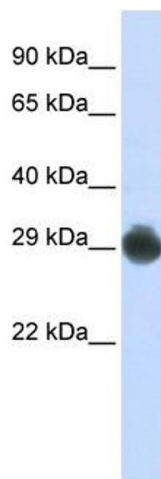
Immunohistochemistry

Image 1. KITLG antibody was used for immunohistochemistry at a concentration of 4-8 ug/ml. Magnification is at 400X



Immunohistochemistry

Image 2. KITLG antibody was used for immunohistochemistry at a concentration of 4-8 ug/ml. Magnification is at 400X



Western Blotting

Image 3. KITLG antibody used at 1 ug/ml to detect target protein.